



ELECTRONIC COPY

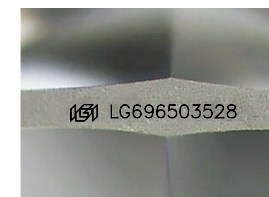
LG696503528
Report verification at igi.org



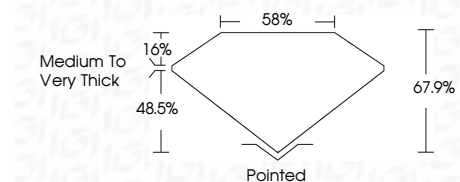
April 17, 2025
IGI Report Number **LG696503528**
Description **LABORATORY GROWN DIAMOND**
Shape and Cutting Style **SQUARE CUSHION BRILLIANT**
Measurements **7.49 X 7.48 X 5.08 MM**

GRADING RESULTS

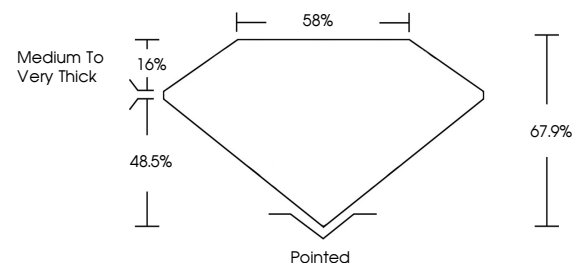
Carat Weight **2.10 CARATS**
Color Grade **F**
Clarity Grade **VS 1**



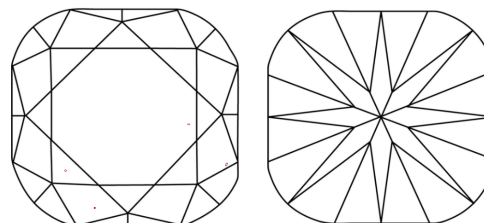
Sample Image Used



PROPORTIONS

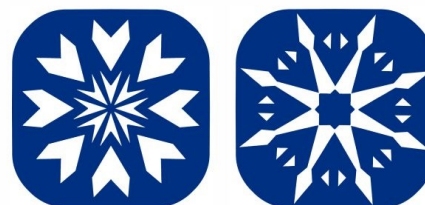


CLARITY CHARACTERISTICS



KEY TO SYMBOLS

Red symbols indicate internal characteristics.
Green symbols indicate external characteristics.



COLOR

D E F G H I J Faint Very Light Light

CLARITY

IF	VS ¹⁻²	VS ¹⁻²	SI ¹⁻²	I ¹⁻³
Internally Flawless	Very Very Slightly Included	Very Slightly Included	Slightly Included	Included

ADDITIONAL GRADING INFORMATION

Polish **EXCELLENT**
Symmetry **EXCELLENT**
Fluorescence **NONE**
Inscription(s) **IGI LG696503528**
Comments: HEARTS & ARROWS
This Laboratory Grown Diamond was created by Chemical Vapor Deposition (CVD) growth process. Type IIa



IGI



April 17, 2025
IGI Report No **LG696503528**
SQUARE CUSHION BRILLIANT
7.49 X 7.48 X 5.08 MM
2.10 CARATS
F
Color Grade
VS 1
Clarity Grade
67.9%
48.5%
Depth
Table
Girdle
Medium to Very Thick
Pointed
EXCELLENT
EXCELLENT
NONE
NONE
IGI LG696503528
Inscription(s)
Comments: HEARTS & ARROWS
This Laboratory Grown Diamond was created by Chemical Vapor Deposition (CVD) growth process. Type IIa