



ELECTRONIC COPY

LG695519643
Report verification at igi.org



April 23, 2025
IGI Report Number **LG695519643**
Description **LABORATORY GROWN DIAMOND**
Shape and Cutting Style **CUSHION MODIFIED BRILLIANT**
Measurements **11.16 X 8.77 X 5.70 MM**
GRADING RESULTS
Carat Weight **5.06 CARATS**
Color Grade **FANCY VIVID ORANGY PINK**
Clarity Grade **VS 1**

LABORATORY GROWN DIAMOND REPORT

April 23, 2025
IGI Report Number **LG695519643**
Description **LABORATORY GROWN DIAMOND**
Shape and Cutting Style **CUSHION MODIFIED BRILLIANT**
Measurements **11.16 X 8.77 X 5.70 MM**

GRADING RESULTS

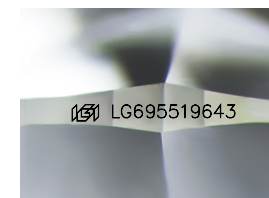
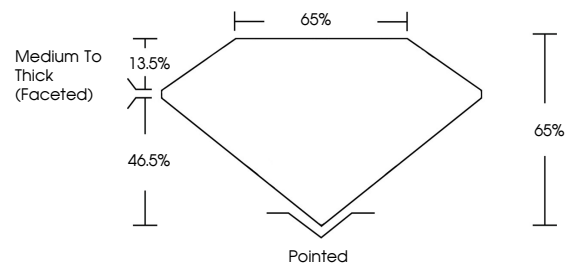
Carat Weight **5.06 CARATS**
Color Grade **FANCY VIVID ORANGY PINK**
Clarity Grade **VS 1**

ADDITIONAL GRADING INFORMATION

Polish **EXCELLENT**
Symmetry **EXCELLENT**
Fluorescence **VERY SLIGHT**
Inscription(s) **LG695519643**

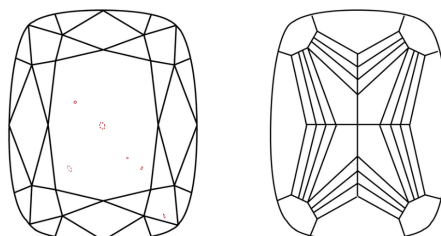
Comments: This Laboratory Grown Diamond was created by Chemical Vapor Deposition (CVD) growth process. Indications of post-growth treatment.

PROPORTIONS



Sample Image Used

CLARITY CHARACTERISTICS



KEY TO SYMBOLS

Red symbols indicate internal characteristics.
Green symbols indicate external characteristics.

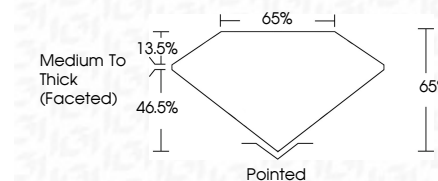
COLOR

D E F G H I J Faint Very Light Light

CLARITY

IF VS¹⁻² VS¹⁻² SI¹⁻² I¹⁻³

Internally Flawless Very Very Slightly Included Very Slightly Included Slightly Included Included



ADDITIONAL GRADING INFORMATION

Polish **EXCELLENT**
Symmetry **EXCELLENT**
Fluorescence **VERY SLIGHT**
Inscription(s) **LG695519643**
Comments: This Laboratory Grown Diamond was created by Chemical Vapor Deposition (CVD) growth process. Indications of post-growth treatment.



April 23, 2025
IGI Report No LG695519643
CUSHION MODIFIED BRILLIANT

5.06 CARATS
Carat Weight
FANCY VIVID ORANGY PINK
Color Grade
VS 1
Clarity Grade
11.16 X 8.77 X 5.70 MM
Depth
65%
Table
65%
Medium To Thick (Faceted)
Grades
Pointed
Culet
EXCELLENT
Polish
EXCELLENT
Symmetry
EXCELLENT
VERY SLIGHT
Fluorescence
Inscription(s)
 LG695519643

Comments: This Laboratory Grown Diamond was created by Chemical Vapor Deposition (CVD) growth process. Indications of post-growth treatment.