



ELECTRONIC COPY

LG695519628
Report verification at igi.org



April 9, 2025

IGI Report Number **LG695519628**

Description **LABORATORY GROWN DIAMOND**

Shape and Cutting Style **CUSHION BRILLIANT**

Measurements **14.95 X 10.74 X 6.86 MM**

GRADING RESULTS

Carat Weight **9.08 CARATS**

Color Grade **E**

Clarity Grade **VVS 2**

April 9, 2025

IGI Report Number **LG695519628**

Description **LABORATORY GROWN DIAMOND**

Shape and Cutting Style **CUSHION BRILLIANT**

Measurements **14.95 X 10.74 X 6.86 MM**

GRADING RESULTS

Carat Weight **9.08 CARATS**

Color Grade **E**

Clarity Grade **VVS 2**

ADDITIONAL GRADING INFORMATION

Polish **EXCELLENT**

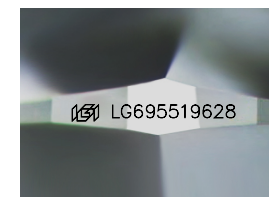
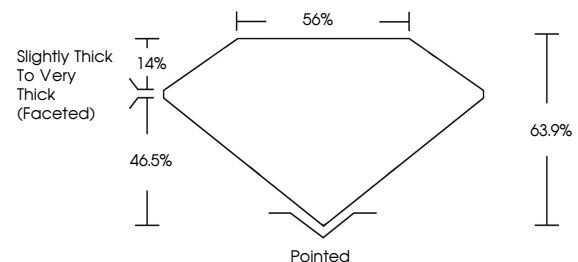
Symmetry **EXCELLENT**

Fluorescence **NONE**

Inscription(s) **IGI LG695519628**

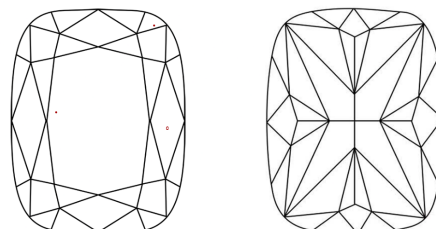
Comments: This Laboratory Grown Diamond was created by Chemical Vapor Deposition (CVD) growth process. Type IIa

PROPORTIONS



Sample Image Used

CLARITY CHARACTERISTICS



KEY TO SYMBOLS

Red symbols indicate internal characteristics.
Green symbols indicate external characteristics.

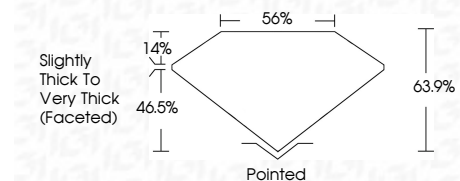
COLOR

D E F G H I J Faint Very Light Light

CLARITY

IF WS¹⁻² VS¹⁻² SI¹⁻² I¹⁻³

Internally Flawless Very Very Slightly Included Very Slightly Included Slightly Included Included



ADDITIONAL GRADING INFORMATION

Polish **EXCELLENT**

Symmetry **EXCELLENT**

Fluorescence **NONE**

Inscription(s) **IGI LG695519628**

Comments: This Laboratory Grown Diamond was created by Chemical Vapor Deposition (CVD) growth process. Type IIa



IGI



April 9, 2025	IGI Report No LG695519628	9.08 CARATS	E
CUSHION BRILLIANT	14.95 X 10.74 X 6.86 MM	VVS 2	63.9%
Carat Weight	Color Grade	Clarity Grade	Table
Depth	Girdle	Slightly Thick To Very Thick (Faceted)	Pointed
Culet	Polish	Symmetry	Fluorescence
Inscriptions(s)	IGI LG695519628	EXCELLENT	EXCELLENT
		NONE	NONE

Comments: This Laboratory Grown Diamond was created by Chemical Vapor Deposition (CVD) growth process. Type IIa