



**ELECTRONIC COPY**

LG695516689  
Report verification at igi.org



April 2, 2025

IGI Report Number **LG695516689**

Description **LABORATORY GROWN DIAMOND**

Shape and Cutting Style **ROUND BRILLIANT**

Measurements **10.97 - 11.02 X 6.78 MM**

**GRADING RESULTS**

Carat Weight **5.10 CARATS**

Color Grade **F**

Clarity Grade **VVS 2**

Cut Grade **IDEAL**

April 2, 2025  
IGI Report Number **LG695516689**  
Description **LABORATORY GROWN DIAMOND**  
Shape and Cutting Style **ROUND BRILLIANT**  
Measurements **10.97 - 11.02 X 6.78 MM**

**GRADING RESULTS**

Carat Weight **5.10 CARATS**

Color Grade **F**

Clarity Grade **VVS 2**

Cut Grade **IDEAL**

**ADDITIONAL GRADING INFORMATION**

Polish **EXCELLENT**

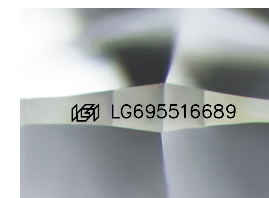
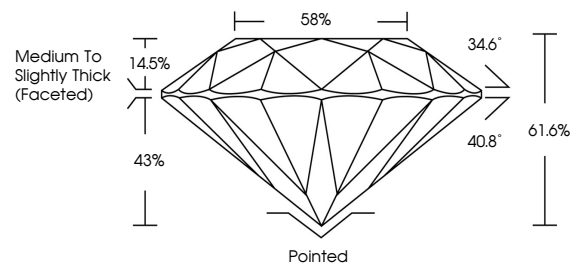
Symmetry **EXCELLENT**

Fluorescence **NONE**

Inscription(s) **IGI LG695516689**

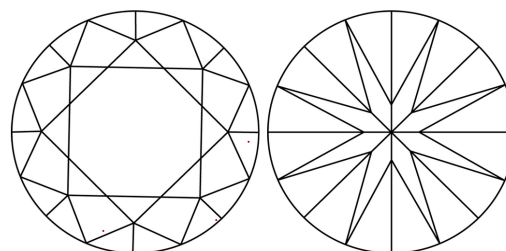
Comments: This Laboratory Grown Diamond was created by Chemical Vapor Deposition (CVD) growth process. Type IIa

**PROPORTIONS**



Sample Image Used

**CLARITY CHARACTERISTICS**



**KEY TO SYMBOLS**

Red symbols indicate internal characteristics.  
Green symbols indicate external characteristics.

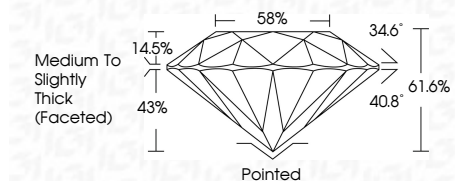
**COLOR**

D E F G H I J Faint Very Light Light

**CLARITY**

IF WS<sup>1-2</sup> VS<sup>1-2</sup> SI<sup>1-2</sup> I<sup>1-3</sup>

Internally Flawless Very Very Slightly Included Very Slightly Included Slightly Included Included



**ADDITIONAL GRADING INFORMATION**

Polish **EXCELLENT**

Symmetry **EXCELLENT**

Fluorescence **NONE**

Inscription(s) **IGI LG695516689**

Comments: This Laboratory Grown Diamond was created by Chemical Vapor Deposition (CVD) growth process. Type IIa



**IGI**



April 2, 2025	IGI Report No. LG695516689	6.10 CARATS	F
ROUND BRILLIANT	10.97 - 11.02 X 6.78 MM	VVS 2	IDEAL
Color Grade	61.6%	58%	Medium To Slightly Thick (Faceted)
Clarity Grade	Pointed	EXCELLENT	EXCELLENT
Depth	Symmetry	EXCELLENT	NONE
Table	Fluorescence	NONE	IGI LG695516689
Girdle	Inscription(s)		
Culet			
Polish			
Symmetry			
Fluorescence			
Inscription(s)			

Comments: This Laboratory Grown Diamond was created by Chemical Vapor Deposition (CVD) growth process. Type IIa