



**ELECTRONIC COPY**

LG695512839  
Report verification at igi.org



April 17, 2025

IGI Report Number **LG695512839**

Description **LABORATORY GROWN DIAMOND**

Shape and Cutting Style **EMERALD CUT**

Measurements **13.54 X 8.75 X 5.50 MM**

**GRADING RESULTS**

Carat Weight **6.53 CARATS**

Color Grade **FANCY VIVID GREEN**

Clarity Grade **VS 1**

April 17, 2025  
IGI Report Number **LG695512839**  
Description **LABORATORY GROWN DIAMOND**  
Shape and Cutting Style **EMERALD CUT**  
Measurements **13.54 X 8.75 X 5.50 MM**

**GRADING RESULTS**

Carat Weight **6.53 CARATS**

Color Grade **FANCY VIVID GREEN**

Clarity Grade **VS 1**

**ADDITIONAL GRADING INFORMATION**

Polish **EXCELLENT**

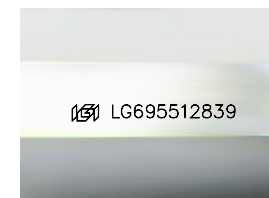
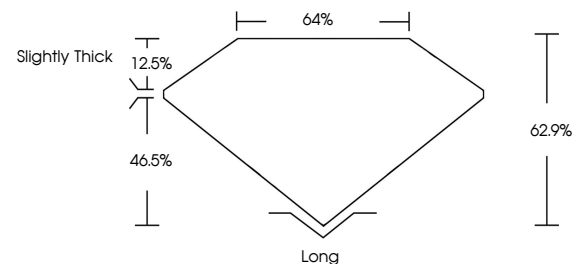
Symmetry **EXCELLENT**

Fluorescence **VERY SLIGHT**

Inscription(s) **LG695512839**

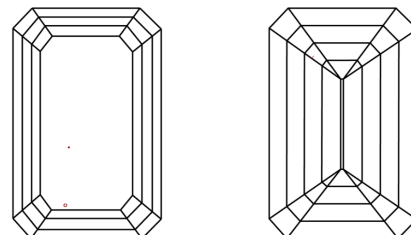
Comments: This Laboratory Grown Diamond was created by Chemical Vapor Deposition (CVD) growth process.  
Indications of post-growth treatment.

**PROPORTIONS**



Sample Image Used

**CLARITY CHARACTERISTICS**



**KEY TO SYMBOLS**

Red symbols indicate internal characteristics.  
Green symbols indicate external characteristics.

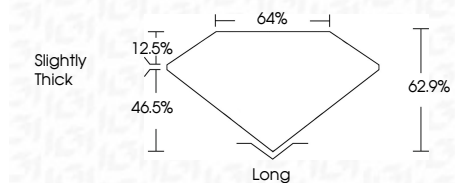
**COLOR**

D E F G H I J Faint Very Light Light

**CLARITY**

IF WS<sup>1-2</sup> VS<sup>1-2</sup> SI<sup>1-2</sup> I<sup>1-3</sup>

Internally Flawless Very Very Slightly Included Very Slightly Included Slightly Included Included



**ADDITIONAL GRADING INFORMATION**

Polish **EXCELLENT**

Symmetry **EXCELLENT**

Fluorescence **VERY SLIGHT**

Inscription(s) **LG695512839**

Comments: This Laboratory Grown Diamond was created by Chemical Vapor Deposition (CVD) growth process.  
Indications of post-growth treatment.



**IGI**



April 17, 2025  
IGI Report No. LG695512839  
**EMERALD CUT**

**6.53 CARATS**  
Carat Weight  
**FANCY VIVID GREEN**  
Color Grade

**VS 1**  
Clarity Grade

**62.9%**  
Table

**64%**  
Girdle

**Slightly Thick**

**Long**  
Culet  
**EXCELLENT**  
Polish  
**EXCELLENT**  
Symmetry  
**VERY SLIGHT**  
Fluorescence  
Inscription(s) **LG695512839**

Comments: This Laboratory Grown Diamond was created by Chemical Vapor Deposition (CVD) growth process.  
Indications of post-growth treatment.