



ELECTRONIC COPY

LG695512837
Report verification at igi.org



April 17, 2025
IGI Report Number **LG695512837**
Description **LABORATORY GROWN DIAMOND**
Shape and Cutting Style **CUSHION MODIFIED BRILLIANT**
Measurements **10.63 X 8.83 X 6.12 MM**
GRADING RESULTS
Carat Weight **5.08 CARATS**
Color Grade **FANCY INTENSE BROWN PINK**
Clarity Grade **SI 1**

LABORATORY GROWN DIAMOND REPORT

April 17, 2025
IGI Report Number **LG695512837**
Description **LABORATORY GROWN DIAMOND**
Shape and Cutting Style **CUSHION MODIFIED BRILLIANT**
Measurements **10.63 X 8.83 X 6.12 MM**

GRADING RESULTS

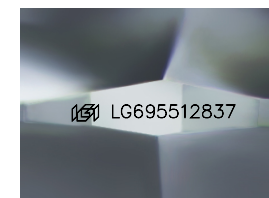
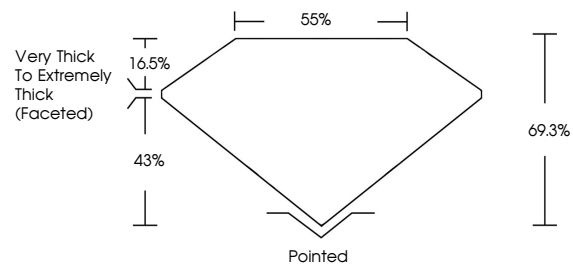
Carat Weight **5.08 CARATS**
Color Grade **FANCY INTENSE BROWN PINK**
Clarity Grade **SI 1**

ADDITIONAL GRADING INFORMATION

Polish **EXCELLENT**
Symmetry **EXCELLENT**
Fluorescence **SLIGHT**
Inscription(s) **LG695512837**

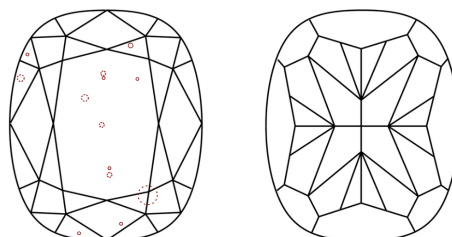
Comments: This Laboratory Grown Diamond was created by Chemical Vapor Deposition (CVD) growth process.
Indications of post-growth treatment.

PROPORTIONS



Sample Image Used

CLARITY CHARACTERISTICS



KEY TO SYMBOLS

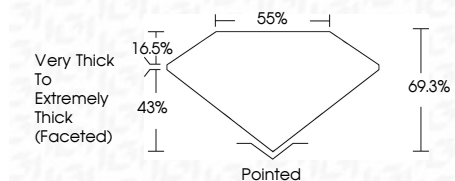
Red symbols indicate internal characteristics.
Green symbols indicate external characteristics.

COLOR

D E F G H I J Faint Very Light Light

CLARITY

IF	VS ¹⁻²	VS ¹⁻²	SI ¹⁻²	I ¹⁻³
Internally Flawless	Very Very Slightly Included	Very Slightly Included	Slightly Included	Included



ADDITIONAL GRADING INFORMATION

Polish **EXCELLENT**
Symmetry **EXCELLENT**
Fluorescence **SLIGHT**
Inscription(s) **LG695512837**
Comments: This Laboratory Grown Diamond was created by Chemical Vapor Deposition (CVD) growth process.
Indications of post-growth treatment.



IGI



April 17, 2025
IGI Report No **LG695512837**
CUSHION MODIFIED BRILLIANT
5.08 CARATS
Carat Weight **FANCY INTENSE BROWN PINK**
Color Grade **SI 1**
Depth **69.3%**
Table **43%**
Girdle **Very Thick to Extremely Thick (Faceted)**
Culet **Pointed**
Polish **EXCELLENT**
Symmetry **EXCELLENT**
Fluorescence **SLIGHT**
Inscription(s) **LG695512837**
Comments: This Laboratory Grown Diamond was created by Chemical Vapor Deposition (CVD) growth process.
Indications of post-growth treatment.