



**INTERNATIONAL
GEMOLOGICAL
INSTITUTE**

ELECTRONIC COPY

LABORATORY GROWN DIAMOND REPORT

April 4, 2025
 IGI Report Number **LG694598586**
 Description **LABORATORY GROWN DIAMOND**
 Shape and Cutting Style **SQUARE EMERALD CUT**
 Measurements **4.64 X 4.62 X 2.72 MM**

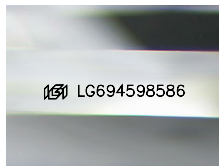
GRADING RESULTS

Carat Weight **0.51 CARAT**
 Color Grade **D**
 Clarity Grade **VS 2**

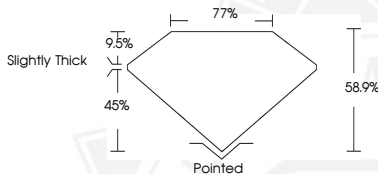
ADDITIONAL GRADING INFORMATION

Polish **VERY GOOD**
 Symmetry **VERY GOOD**
 Fluorescence **NONE**
 Inscription(s) **IGI LG694598586**

Comments: As Grown - No indication of post-growth treatment. This Laboratory Grown Diamond was created by High Pressure High Temperature (HPHT) growth process. Type II



Sample Image Used



April 4, 2025
 IGI Report Number **LG694598586**
SQUARE EMERALD CUT
LABORATORY GROWN DIAMOND
4.64 X 4.62 X 2.72 MM
 Carat Weight **0.51 CARAT**
 Color Grade **D**
 Clarity Grade **VS 2**
 Polish **VERY GOOD**
 Symmetry **VERY GOOD**
 Fluorescence **NONE**
 Inscription(s) **IGI LG694598586**

Comments: As Grown - No indication of post-growth treatment. This Laboratory Grown Diamond was created by High Pressure High Temperature (HPHT) growth process. Type II



April 4, 2025
 IGI Report Number **LG694598586**
SQUARE EMERALD CUT
LABORATORY GROWN DIAMOND
4.64 X 4.62 X 2.72 MM
 Carat Weight **0.51 CARAT**
 Color Grade **D**
 Clarity Grade **VS 2**
 Polish **VERY GOOD**
 Symmetry **VERY GOOD**
 Fluorescence **NONE**
 Inscription(s) **IGI LG694598586**

Comments: As Grown - No indication of post-growth treatment. This Laboratory Grown Diamond was created by High Pressure High Temperature (HPHT) growth process. Type II

THIS DOCUMENT WAS PRODUCED WITH THE FOLLOWING SECURITY MEASURES: SPECIAL DOCUMENT PAPER, INK SCREENS, WATERMARK, BACKGROUND DESIGN, HOLOGRAM AND OTHER SECURITY FEATURES NOT LISTED AND DO EXCEED DOCUMENT SECURITY INDUSTRY GUIDELINES.

For terms & conditions and to verify this report, please visit www.igi.org