

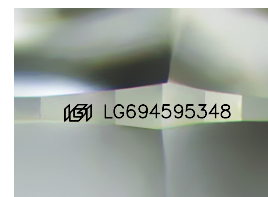
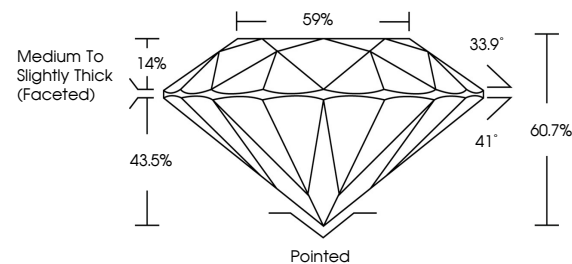


**ELECTRONIC COPY**

## LABORATORY GROWN DIAMOND REPORT

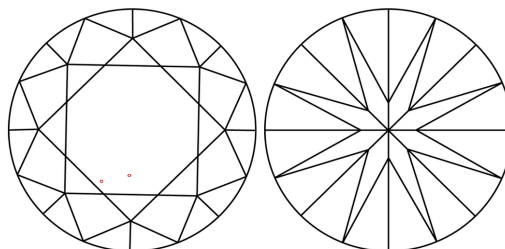
LG694595348  
Report verification at [igi.org](https://igi.org)

## PROPORTIONS



Sample Image Used

## CLARITY CHARACTERISTICS



### KEY TO SYMBOLS

Red symbols indicate internal characteristics.  
Green symbols indicate external characteristics.

## COLOR

D E F G H I J Faint Very Light Light

## CLARITY

IF WS<sup>1-2</sup> VS<sup>1-2</sup> SI<sup>1-2</sup> |<sup>1-3</sup>

Internally Flawless	Very Very Slightly Included	Very Slightly Included	Slightly Included	Included
------------------------	--------------------------------	---------------------------	----------------------	----------



March 28, 2025

IGI Report Number **LG694595348**

Description	LABORATORY GROWN DIAMOND
-------------	--------------------------

Shape and Cutting Style **ROUND BRILLIANT**

Measurements 9.33 - 9.40 X 5.69 MM

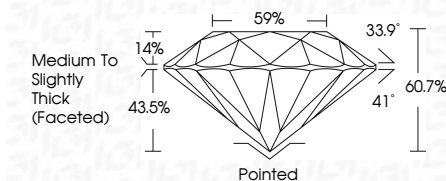
## GRADING RESULTS

Carat Weight **3.08 CARATS**

Color Grade **G**

Clarity Grade VS 1

Cut Grade **IDEAL**



### ADDITIONAL GRADING INFORMATION

Polish **EXCELLENT**Symmetry **EXCELLENT**Fluorescence **NONE**Inscription(s)  LG694595348

Comments: This Laboratory Grown Diamond was created by Chemical Vapor Deposition (CVD) growth process.  
Type IIa



© IGI 2020, International Gemological Institute

FD - 10 20

**www.igi.org**



THIS DOCUMENT WAS PRODUCED WITH THE FOLLOWING SECURITY MEASURES: SPECIAL DOCUMENT PAPER, INK SCREENS, WATERMARK, BACKGROUND DESIGNS, HOLOGRAM AND OTHER SECURITY FEATURES NOT LISTED AND DO EXCEED DOCUMENT SECURITY INDUSTRY GUIDELINES

March 28, 2025	GI Report No. LG4959348	3.08 CARATS	VSI	Pointed	Comments: This Laboratory Grown Diamond was created by Chemical Vapor Deposition (CVD) growth process. Type IIa
ROUND BRILLIANT		G	IDEAL	EXCELLENT	
33 - 33 - 5.40 X 5.09 MM	Carat Weight		60.7%	EXCELLENT	
	Color Grade		Medium to Slightly Thick Facetted	NONE	
	Cut Grade			IGI LG4959348	
	Depth	Clarity Grade		Culet	
	Table	Cut Grade		Polish	
	Girdle			Symmetry	
				Fluorescence	
				Inclusions(s)	