



ELECTRONIC COPY

LG694582064 Report verification at igi.org



April 19, 2025 IGI Report Number LG694582064 Description LABORATORY GROWN DIAMOND Shape and Cutting Style CUT CORNERED RECTANGULAR MIXED CUT Measurements 7.60 X 4.42 X 2.78 MM GRADING RESULTS Carat Weight 1.01 CARAT Color Grade FANCY INTENSE GREEN Clarity Grade VS 1

LABORATORY GROWN DIAMOND REPORT

April 19, 2025 IGI Report Number LG694582064 Description LABORATORY GROWN DIAMOND Shape and Cutting Style CUT CORNERED RECTANGULAR MIXED CUT Measurements 7.60 X 4.42 X 2.78 MM

GRADING RESULTS

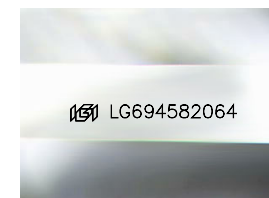
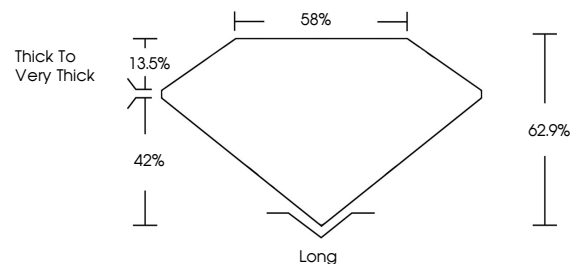
Carat Weight 1.01 CARAT Color Grade FANCY INTENSE GREEN Clarity Grade VS 1

ADDITIONAL GRADING INFORMATION

Polish EXCELLENT Symmetry EXCELLENT Fluorescence VERY SLIGHT Inscription(s) IGI LG694582064

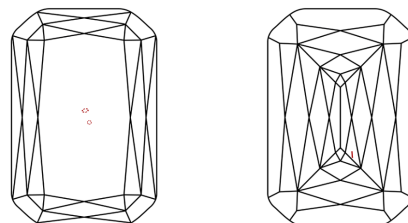
Comments: This Laboratory Grown Diamond was created by Chemical Vapor Deposition (CVD) growth process. Indications of post-growth treatment.

PROPORTIONS



Sample Image Used

CLARITY CHARACTERISTICS



KEY TO SYMBOLS

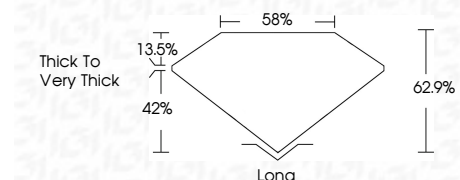
Red symbols indicate internal characteristics. Green symbols indicate external characteristics.

COLOR

D E F G H I J Faint Very Light Light

CLARITY

IF VS 1-2 VS 1-2 SI 1-2 I 1-3 Internally Flawless Very Very Slightly Included Very Slightly Included Slightly Included Included



ADDITIONAL GRADING INFORMATION

Polish EXCELLENT Symmetry EXCELLENT Fluorescence VERY SLIGHT Inscription(s) IGI LG694582064 Comments: This Laboratory Grown Diamond was created by Chemical Vapor Deposition (CVD) growth process. Indications of post-growth treatment.



April 19, 2025 IGI Report No LG694582064 CUT CORNERED RECT. MIXED CUT 7.60 X 4.42 X 2.78 MM 1.01 CARAT FANCY INTENSE GREEN VS 1 62.9% 58% Thick To Very Thick Long EXCELLENT EXCELLENT VERY SLIGHT IGI LG694582064 Comments: This Laboratory Grown Diamond was created by Chemical Vapor Deposition (CVD) growth process. Indications of post-growth treatment.