



ELECTRONIC COPY

LABORATORY GROWN DIAMOND REPORT

April 7, 2025  
IGI Report Number **LG694580134**  
Description **LABORATORY GROWN DIAMOND**  
Shape and Cutting Style **ROUND CORNERED RECTANGULAR MODIFIED BRILLIANT**  
Measurements **11.01 X 7.01 X 4.27 MM**

GRADING RESULTS

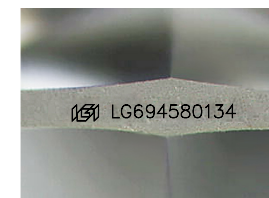
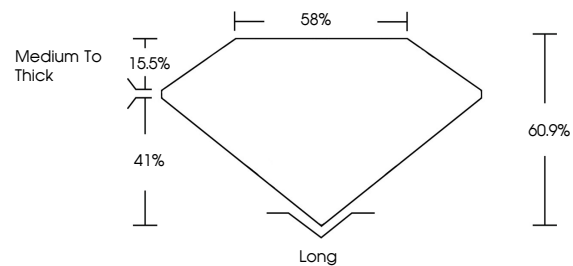
Carat Weight **3.06 CARATS**  
Color Grade **G**  
Clarity Grade **VS 2**

ADDITIONAL GRADING INFORMATION

Polish **EXCELLENT**  
Symmetry **EXCELLENT**  
Fluorescence **NONE**  
Inscription(s) **IGI LG694580134**

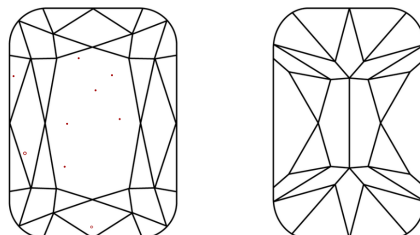
Comments: This Laboratory Grown Diamond was created by Chemical Vapor Deposition (CVD) growth process. Type IIa

PROPORTIONS



Sample Image Used

CLARITY CHARACTERISTICS



KEY TO SYMBOLS

Red symbols indicate internal characteristics.  
Green symbols indicate external characteristics.

COLOR

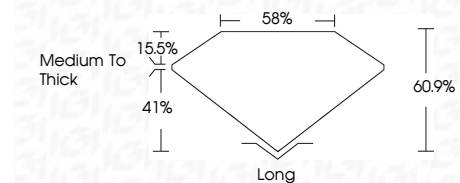
D E F G H I J Faint Very Light Light

CLARITY

IF VS<sup>1-2</sup> VS<sup>1-2</sup> SI<sup>1-2</sup> I<sup>1-3</sup>  
Internally Flawless Very Very Slightly Included Very Slightly Included Slightly Included Included



April 7, 2025  
IGI Report Number **LG694580134**  
Description **LABORATORY GROWN DIAMOND**  
Shape and Cutting Style **ROUND CORNERED RECTANGULAR MODIFIED BRILLIANT**  
Measurements **11.01 X 7.01 X 4.27 MM**  
GRADING RESULTS  
Carat Weight **3.06 CARATS**  
Color Grade **G**  
Clarity Grade **VS 2**



ADDITIONAL GRADING INFORMATION

Polish **EXCELLENT**  
Symmetry **EXCELLENT**  
Fluorescence **NONE**  
Inscription(s) **IGI LG694580134**  
Comments: This Laboratory Grown Diamond was created by Chemical Vapor Deposition (CVD) growth process. Type IIa



IGI



April 7, 2025  
IGI Report No **LG694580134**  
**ROUND CORNERED RECT. MODIFIED BRILLIANT**  
**11.01 X 7.01 X 4.27 MM**  
Carat Weight **3.06 CARATS**  
Color Grade **G**  
Clarity Grade **VS 2**  
Depth **40.9%**  
Table **15.5%**  
Girdle **Medium to Thick**  
Culet **Long**  
Polish **EXCELLENT**  
Symmetry **EXCELLENT**  
Fluorescence **NONE**  
Inscription(s) **IGI LG694580134**

Comments: This Laboratory Grown Diamond was created by Chemical Vapor Deposition (CVD) growth process. Type IIa