



**INTERNATIONAL
GEMOLOGICAL
INSTITUTE**

ELECTRONIC COPY

LABORATORY GROWN DIAMOND REPORT

| | |
|-------------------------|--------------------------|
| March 29, 2025 | |
| IGI Report Number | LG694573414 |
| Description | LABORATORY GROWN DIAMOND |
| Shape and Cutting Style | PEAR BRILLIANT |
| Measurements | 14.85 X 9.43 X 5.73 MM |

GRADING RESULTS

| | |
|---------------|-------------|
| Carat Weight | 4.71 CARATS |
| Color Grade | F |
| Clarity Grade | VS 1 |

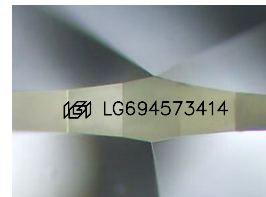
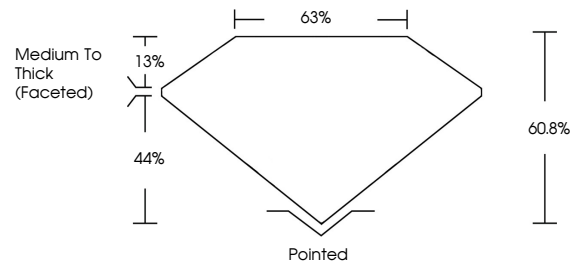
ADDITIONAL GRADING INFORMATION

| | |
|----------------|---|
| Polish | EXCELLENT |
| Symmetry | EXCELLENT |
| Fluorescence | NONE |
| Inscription(s) |  LG694573414 |

Comments: This Laboratory Grown Diamond was created by Chemical Vapor Deposition (CVD) growth process.
Type IIa

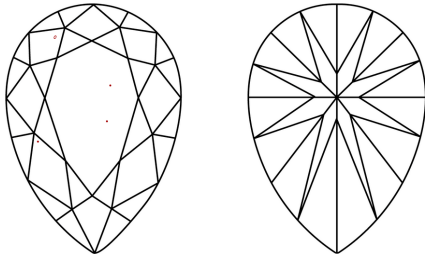
LG694573414
Report verification at igi.org

PROPORTIONS



Sample Image Used

CLARITY CHARACTERISTICS



KEY TO SYMBOLS

Red symbols indicate internal characteristics.
Green symbols indicate external characteristics.

COLOR

D E F G H I J Faint Very Light Light

CLARITY

| IF | VVS ¹⁻² | VS ¹⁻² | SI ¹⁻² | I ¹⁻³ |
|---------------------|-----------------------------|------------------------|-------------------|------------------|
| Internally Flawless | Very Very Slightly Included | Very Slightly Included | Slightly Included | Included |



© IGI 2020, International Gemological Institute

FD - 10 20



THIS DOCUMENT WAS PRODUCED WITH THE FOLLOWING SECURITY MEASURES: SPECIAL DOCUMENT PAPER, INK SCREENS, WATERMARK BACKGROUND DESIGNS, HOLOGRAM AND OTHER SECURITY FEATURES NOT LISTED AND DO EXCEED DOCUMENT SECURITY INDUSTRY GUIDELINES.

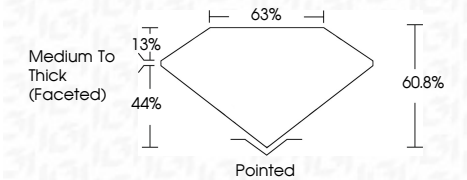
LABORATORY GROWN DIAMOND REPORT



| | |
|-------------------------|--------------------------|
| March 29, 2025 | |
| IGI Report Number | LG694573414 |
| Description | LABORATORY GROWN DIAMOND |
| Shape and Cutting Style | PEAR BRILLIANT |
| Measurements | 14.85 X 9.43 X 5.73 MM |

GRADING RESULTS

| | |
|---------------|-------------|
| Carat Weight | 4.71 CARATS |
| Color Grade | F |
| Clarity Grade | VS 1 |



ADDITIONAL GRADING INFORMATION

| | |
|---|---|
| Polish | EXCELLENT |
| Symmetry | EXCELLENT |
| Fluorescence | NONE |
| Inscription(s) |  LG694573414 |
| <p>Comments: This Laboratory Grown Diamond was created by Chemical Vapor Deposition (CVD) growth process.</p> <p>Type IIa</p> | |



IGI

| | |
|--|------------------------------|
| March 29, 2025 | |
| IGI Report No. LG594573414 | |
| PEAR BRILLIANT | |
| 14.85 X 9.43 X 5.73 MM | 4.71 CARATS |
| Color Grade | F |
| Clarity Grade | Vs 1 |
| Depth | 60.8% |
| Table | 63% |
| Girdle | Medium to thick (Faceted) |
| Culet | Pointed |
| Polish | EXCELLENT |
| Symmetry | EXCELLENT |
| Fluorescence inscriptions(s) | NONE |
| | 1691LG594573414 |
| Comments: | |
| This Laboratory Grown Diamond was created by Chemical Vapor Deposition (CVD) growth process. | |
| Type Ila | |

Comments:
This Laboratory Grown Diamond was created by Chemical Vapor Deposition (CVD) growth process.

www.igi.org