



ELECTRONIC COPY

LG694572945
Report verification at igi.org

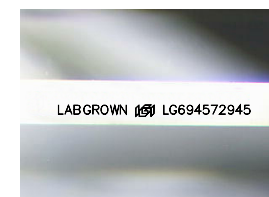


April 4, 2025
IGI Report Number **LG694572945**
Description **LABORATORY GROWN DIAMOND**
Shape and Cutting Style **CUT CORNERED
RECTANGULAR MODIFIED
BRILLIANT**

Measurements **7.53 X 5.32 X 3.49 MM**

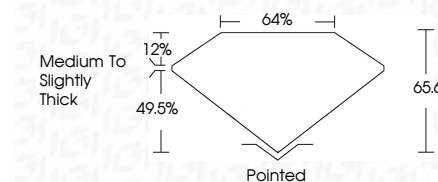
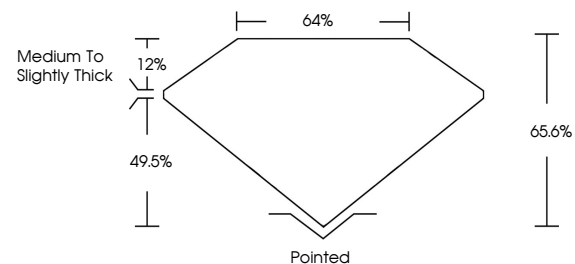
GRADING RESULTS

Carat Weight **1.17 CARAT**
Color Grade **E**
Clarity Grade **VS 2**



Sample Image Used

PROPORTIONS



April 4, 2025
IGI Report Number **LG694572945**
Description **LABORATORY GROWN DIAMOND**
Shape and Cutting Style **CUT CORNERED RECTANGULAR
MODIFIED BRILLIANT**
Measurements **7.53 X 5.32 X 3.49 MM**

GRADING RESULTS

Carat Weight **1.17 CARAT**
Color Grade **E**
Clarity Grade **VS 2**

ADDITIONAL GRADING INFORMATION

Polish **EXCELLENT**
Symmetry **EXCELLENT**
Fluorescence **NONE**
Inscription(s) **LABGROWN (IGI) LG694572945**

Comments: This Laboratory Grown Diamond was created by Chemical Vapor Deposition (CVD) growth process.
Type IIa

COLOR

D E F G H I J Faint Very Light Light

CLARITY

IF	WS ¹⁻²	VS ¹⁻²	SI ¹⁻²	I ¹⁻³
Internally Flawless	Very Very Slightly Included	Very Slightly Included	Slightly Included	Included

ADDITIONAL GRADING INFORMATION

Polish **EXCELLENT**
Symmetry **EXCELLENT**
Fluorescence **NONE**
Inscription(s) **LABGROWN (IGI) LG694572945**
Comments: This Laboratory Grown Diamond was created by Chemical Vapor Deposition (CVD) growth process.
Type IIa



April 4, 2025
IGI Report No **LG694572945**
CUT CORNERED RECT. MODIFIED BRILLIANT
7.53 X 5.32 X 3.49 MM
Carat Weight **1.17 CARAT**
Color Grade **E**
Clarity Grade **VS 2**
Table **64%**
Girdle **65.6%**
Culet **Medium to Slightly Thick**
Polish **Pointed**
Symmetry **EXCELLENT**
Fluorescence **EXCELLENT**
Inscription(s) **NONE**
LABGROWN (IGI) LG694572945
Comments: This Laboratory Grown Diamond was created by Chemical Vapor Deposition (CVD) growth process.
Type IIa