



ELECTRONIC COPY

LG694572895
Report verification at igi.org



April 2, 2025

IGI Report Number **LG694572895**

Description **LABORATORY GROWN DIAMOND**

Shape and Cutting Style **ROUND BRILLIANT**

Measurements **7.78 - 7.81 X 4.85 MM**

GRADING RESULTS

Carat Weight **1.82 CARAT**

Color Grade **D**

Clarity Grade **VVS 2**

Cut Grade **IDEAL**

April 2, 2025

IGI Report Number **LG694572895**

Description **LABORATORY GROWN DIAMOND**

Shape and Cutting Style **ROUND BRILLIANT**

Measurements **7.78 - 7.81 X 4.85 MM**

GRADING RESULTS

Carat Weight **1.82 CARAT**

Color Grade **D**

Clarity Grade **VVS 2**

Cut Grade **IDEAL**

ADDITIONAL GRADING INFORMATION

Polish **EXCELLENT**

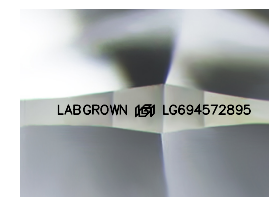
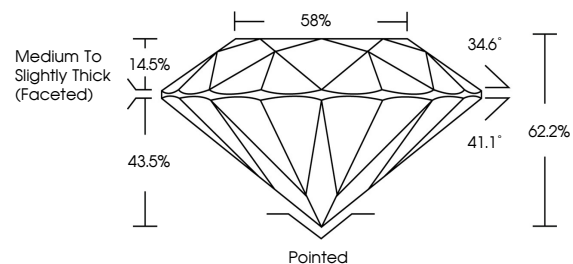
Symmetry **EXCELLENT**

Fluorescence **NONE**

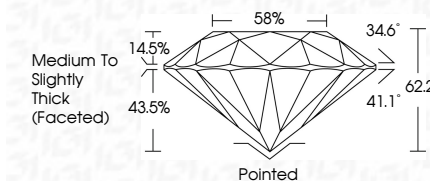
Inscription(s) **LABGROWN (IGI) LG694572895**

Comments: This Laboratory Grown Diamond was created by Chemical Vapor Deposition (CVD) growth process. Type IIa

PROPORTIONS



Sample Image Used



COLOR

D E F G H I J Faint Very Light Light

CLARITY

IF VS¹⁻² VS¹⁻² SI¹⁻² I¹⁻³

Internally Flawless Very Very Slightly Included Very Slightly Included Slightly Included Included

ADDITIONAL GRADING INFORMATION

Polish **EXCELLENT**

Symmetry **EXCELLENT**

Fluorescence **NONE**

Inscription(s) **LABGROWN (IGI) LG694572895**

Comments: This Laboratory Grown Diamond was created by Chemical Vapor Deposition (CVD) growth process. Type IIa



IGI



April 2, 2025	IGI Report No LG694572895	1.82 CARAT	D	Pointed	EXCELLENT	EXCELLENT	NONE	LABGROWN (IGI) LG694572895
ROUND BRILLIANT	7.78 - 7.81 X 4.85 MM	Color Grade	VVS 2	Depth	62.2%	Medium To Slightly Thick (Faceted)	Polish	EXCELLENT
		Clarity Grade	IDEAL	Table	14.5%	Crown Angle	Symmetry	EXCELLENT
		Cut Grade	IDEAL	Girdle	43.5%	Pavilion Angle	Fluorescence	NONE
							Inscription(s)	LABGROWN (IGI) LG694572895
							Comments:	This Laboratory Grown Diamond was created by Chemical Vapor Deposition (CVD) growth process. Type IIa