



**ELECTRONIC COPY**

LG694563548  
Report verification at igi.org



March 28, 2025  
IGI Report Number **LG694563548**  
Description **LABORATORY GROWN DIAMOND**  
Shape and Cutting Style **SQUARE EMERALD CUT**  
Measurements **7.72 X 7.62 X 4.92 MM**  
**GRADING RESULTS**  
Carat Weight **2.71 CARATS**  
Color Grade **D**  
Clarity Grade **INTERNALLY FLAWLESS**

March 28, 2025  
IGI Report Number **LG694563548**  
Description **LABORATORY GROWN DIAMOND**  
Shape and Cutting Style **SQUARE EMERALD CUT**  
Measurements **7.72 X 7.62 X 4.92 MM**

**GRADING RESULTS**

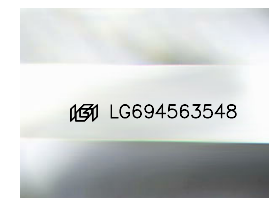
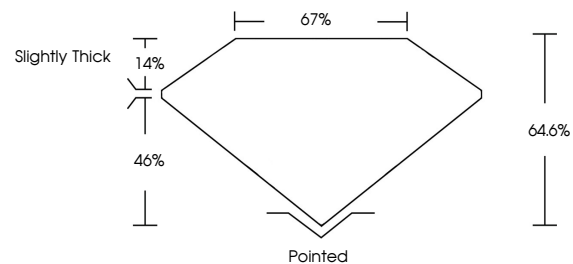
Carat Weight **2.71 CARATS**  
Color Grade **D**  
Clarity Grade **INTERNALLY FLAWLESS**

**ADDITIONAL GRADING INFORMATION**

Polish **EXCELLENT**  
Symmetry **EXCELLENT**  
Fluorescence **NONE**  
Inscription(s) **IGI LG694563548**

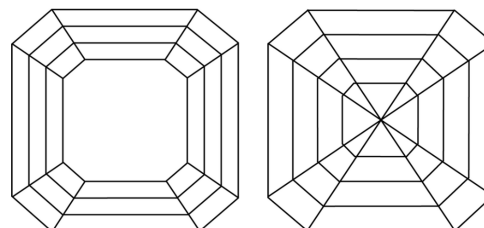
Comments: This Laboratory Grown Diamond was created by Chemical Vapor Deposition (CVD) growth process.  
Type IIa

**PROPORTIONS**



Sample Image Used

**CLARITY CHARACTERISTICS**



**KEY TO SYMBOLS**

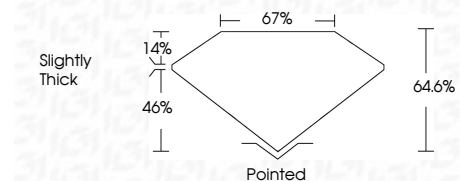
Red symbols indicate internal characteristics.  
Green symbols indicate external characteristics.

**COLOR**

D E F G H I J Faint Very Light Light

**CLARITY**

IF	VS <sup>1-2</sup>	VS <sup>1-2</sup>	SI <sup>1-2</sup>	I <sup>1-3</sup>
Internally Flawless	Very Very Slightly Included	Very Slightly Included	Slightly Included	Included



**ADDITIONAL GRADING INFORMATION**

Polish **EXCELLENT**  
Symmetry **EXCELLENT**  
Fluorescence **NONE**  
Inscription(s) **IGI LG694563548**  
Comments: This Laboratory Grown Diamond was created by Chemical Vapor Deposition (CVD) growth process.  
Type IIa



March 28, 2025  
IGI Report No **LG694563548**  
**SQUARE EMERALD CUT**  
2.71 CARATS  
Color Grade **D**  
Clarity Grade **IF**  
Depth **64.6%**  
Table **67%**  
Girdle **Slightly Thick**  
Culet **Pointed**  
Polish **EXCELLENT**  
Symmetry **EXCELLENT**  
Fluorescence **NONE**  
Inscription(s) **IGI LG694563548**  
Comments: This Laboratory Grown Diamond was created by Chemical Vapor Deposition (CVD) growth process.  
Type IIa