



ELECTRONIC COPY

LG694559115
Report verification at igi.org



April 22, 2025

IGI Report Number **LG694559115**

Description **LABORATORY GROWN DIAMOND**

Shape and Cutting Style **PRINCESS CUT**

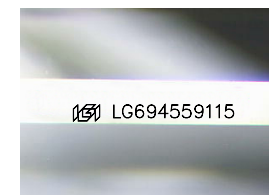
Measurements **6.36 X 6.28 X 4.53 MM**

GRADING RESULTS

Carat Weight **1.59 CARAT**

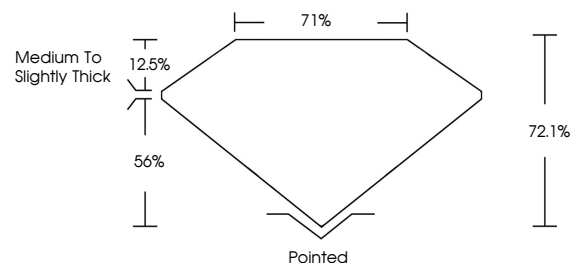
Color Grade **D**

Clarity Grade **VS 1**

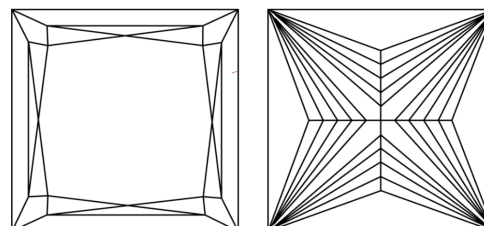


Sample Image Used

PROPORTIONS



CLARITY CHARACTERISTICS



KEY TO SYMBOLS

Red symbols indicate internal characteristics.
Green symbols indicate external characteristics.

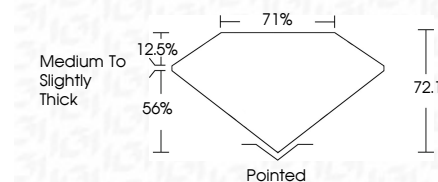
COLOR

D E F G H I J Faint Very Light Light

CLARITY

IF WS¹⁻² VS¹⁻² SI¹⁻² I¹⁻³

Internally Flawless Very Very Slightly Included Very Slightly Included Slightly Included Included



ADDITIONAL GRADING INFORMATION

Polish **EXCELLENT**

Symmetry **EXCELLENT**

Fluorescence **NONE**

Inscription(s) **IGI LG694559115**

Comments: This Laboratory Grown Diamond was created by Chemical Vapor Deposition (CVD) growth process. Type IIa. Indications of post-growth treatment.



April 22, 2025
IGI Report No. LG694559115
PRINCESS CUT
6.36 X 6.28 X 4.53 MM
1.59 CARAT
Color Grade D
Clarity Grade VS 1
Depth 72.1%
Table 71%
Girdle Medium to Slightly Thick
Culet Pointed
Polish EXCELLENT
Symmetry EXCELLENT
Fluorescence NONE
Inscription(s) IGI LG694559115

Comments: This Laboratory Grown Diamond was created by Chemical Vapor Deposition (CVD) growth process. Type IIa. Indications of post-growth treatment.