



**ELECTRONIC COPY**

LG694551804  
Report verification at igi.org



March 27, 2025

IGI Report Number **LG694551804**

Description **LABORATORY GROWN DIAMOND**

Shape and Cutting Style **PRINCESS CUT**

Measurements **9.50 X 9.46 X 7.06 MM**

**GRADING RESULTS**

Carat Weight **5.50 CARATS**

Color Grade **F**

Clarity Grade **VS 1**

March 27, 2025  
IGI Report Number **LG694551804**  
Description **LABORATORY GROWN DIAMOND**  
Shape and Cutting Style **PRINCESS CUT**  
Measurements **9.50 X 9.46 X 7.06 MM**

**GRADING RESULTS**

Carat Weight **5.50 CARATS**

Color Grade **F**

Clarity Grade **VS 1**

**ADDITIONAL GRADING INFORMATION**

Polish **EXCELLENT**

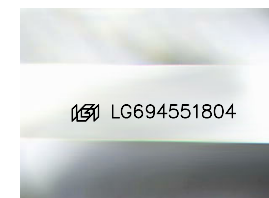
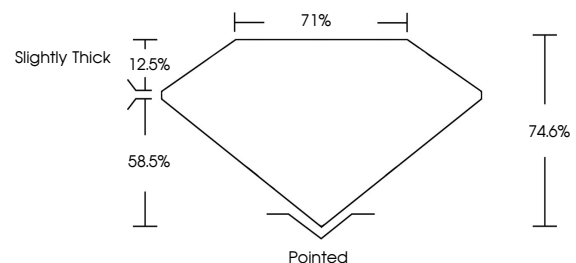
Symmetry **EXCELLENT**

Fluorescence **NONE**

Inscription(s) **IGI LG694551804**

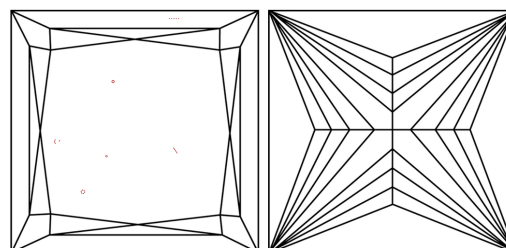
Comments: This Laboratory Grown Diamond was created by Chemical Vapor Deposition (CVD) growth process.  
Type IIa

**PROPORTIONS**



Sample Image Used

**CLARITY CHARACTERISTICS**



**KEY TO SYMBOLS**

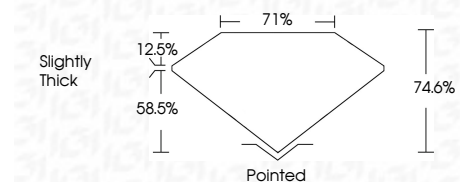
Red symbols indicate internal characteristics.  
Green symbols indicate external characteristics.

**COLOR**

D E F G H I J Faint Very Light Light

**CLARITY**

IF	VS <sup>1-2</sup>	VS <sup>1-2</sup>	SI <sup>1-2</sup>	I <sup>1-3</sup>
Internally Flawless	Very Very Slightly Included	Very Slightly Included	Slightly Included	Included



**ADDITIONAL GRADING INFORMATION**

Polish **EXCELLENT**

Symmetry **EXCELLENT**

Fluorescence **NONE**

Inscription(s) **IGI LG694551804**

Comments: This Laboratory Grown Diamond was created by Chemical Vapor Deposition (CVD) growth process.  
Type IIa



**IGI**



March 27, 2025  
IGI Report No. **LG694551804**  
**PRINCESS CUT**

**5.50 CARATS**  
Color Grade **F**

Clarity Grade **VS 1**  
Table **74.6%**  
Depth **58.5%**  
Girdle **Slightly Thick**

Culet **Pointed**  
Polish **EXCELLENT**  
Symmetry **EXCELLENT**  
Fluorescence **NONE**  
Inscription(s) **IGI LG694551804**

Comments: This Laboratory Grown Diamond was created by Chemical Vapor Deposition (CVD) growth process.  
Type IIa