



**ELECTRONIC COPY**

LG694550943  
Report verification at igi.org



April 7, 2025  
IGI Report Number **LG694550943**  
Description **LABORATORY GROWN DIAMOND**  
Shape and Cutting Style **SQUARE CUSHION MODIFIED BRILLIANT**  
Measurements **12.35 X 11.86 X 7.66 MM**  
**GRADING RESULTS**  
Carat Weight **10.04 CARATS**  
Color Grade **FANCY INTENSE PINK**  
Clarity Grade **VS 2**

April 7, 2025  
IGI Report Number **LG694550943**  
Description **LABORATORY GROWN DIAMOND**  
Shape and Cutting Style **SQUARE CUSHION MODIFIED BRILLIANT**  
Measurements **12.35 X 11.86 X 7.66 MM**

**GRADING RESULTS**

Carat Weight **10.04 CARATS**  
Color Grade **FANCY INTENSE PINK**  
Clarity Grade **VS 2**

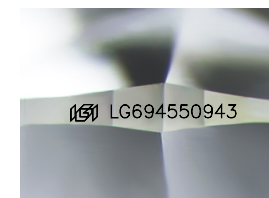
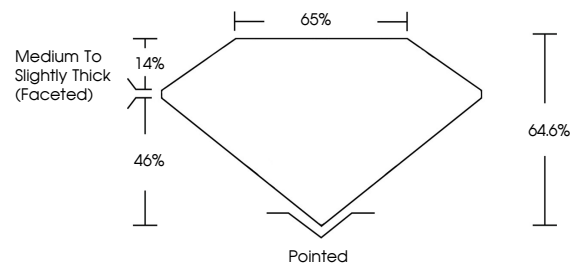
**ADDITIONAL GRADING INFORMATION**

Polish **EXCELLENT**  
Symmetry **EXCELLENT**  
Fluorescence **SLIGHT**  
Inscription(s) **IGI LG694550943**

Comments: This Laboratory Grown Diamond was created by Chemical Vapor Deposition (CVD) growth process.  
Indications of post-growth treatment.

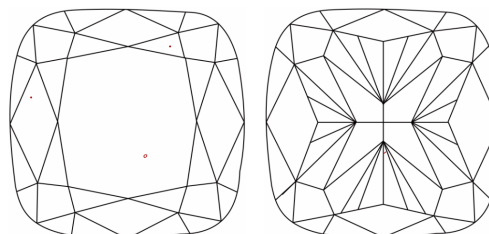
Secondary color: Orange

**PROPORTIONS**



Sample Image Used

**CLARITY CHARACTERISTICS**



**KEY TO SYMBOLS**

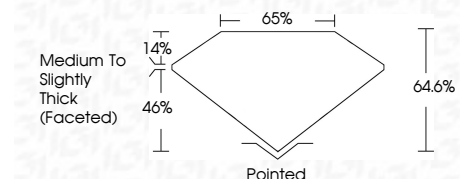
Red symbols indicate internal characteristics.  
Green symbols indicate external characteristics.

**COLOR**

D E F G H I J Faint Very Light Light

**CLARITY**

IF	VS <sup>1-2</sup>	VS <sup>1-2</sup>	SI <sup>1-2</sup>	I <sup>1-3</sup>
Internally Flawless	Very Very Slightly Included	Very Slightly Included	Slightly Included	Included



**ADDITIONAL GRADING INFORMATION**

Polish **EXCELLENT**  
Symmetry **EXCELLENT**  
Fluorescence **SLIGHT**  
Inscription(s) **IGI LG694550943**  
Comments: This Laboratory Grown Diamond was created by Chemical Vapor Deposition (CVD) growth process.  
Indications of post-growth treatment.  
Secondary color: Orange



April 7, 2025  
IGI Report No. **LG694550943**  
**SQUARE CUSHION MODIFIED BRILLIANT**  
**12.35 X 11.86 X 7.66 MM**  
Carat Weight **10.04 CARATS**  
Color Grade **FANCY INTENSE PINK**  
Clarity Grade **VS 2**  
Table **65%**  
Girdle **Medium to Slightly Thick (Faceted)**  
Culet **Pointed**  
Polish **EXCELLENT**  
Symmetry **EXCELLENT**  
Fluorescence **SLIGHT**  
Inscription(s) **IGI LG694550943**  
Comments: This Laboratory Grown Diamond was created by Chemical Vapor Deposition (CVD) growth process.  
Indications of post-growth treatment.  
Secondary color: Orange