



ELECTRONIC COPY

LG694550885
Report verification at igi.org



May 3, 2025
IGI Report Number **LG694550885**
Description **LABORATORY GROWN DIAMOND**
Shape and Cutting Style **CUSHION MODIFIED BRILLIANT**
Measurements **9.41 X 8.76 X 5.72 MM**
GRADING RESULTS
Carat Weight **4.29 CARATS**
Color Grade **FANCY VIVID BROWNISH PINK**
Clarity Grade **VS 1**

LABORATORY GROWN DIAMOND REPORT

May 3, 2025
IGI Report Number **LG694550885**
Description **LABORATORY GROWN DIAMOND**
Shape and Cutting Style **CUSHION MODIFIED BRILLIANT**
Measurements **9.41 X 8.76 X 5.72 MM**

GRADING RESULTS

Carat Weight **4.29 CARATS**
Color Grade **FANCY VIVID BROWNISH PINK**
Clarity Grade **VS 1**

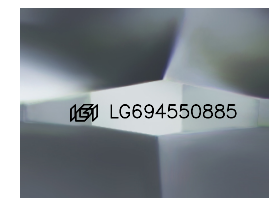
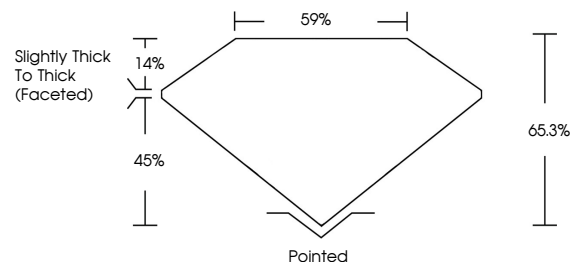
ADDITIONAL GRADING INFORMATION

Polish **EXCELLENT**
Symmetry **EXCELLENT**
Fluorescence **SLIGHT**
Inscription(s) **LG694550885**

Comments: This Laboratory Grown Diamond was created by Chemical Vapor Deposition (CVD) growth process.
Indications of post-growth treatment.

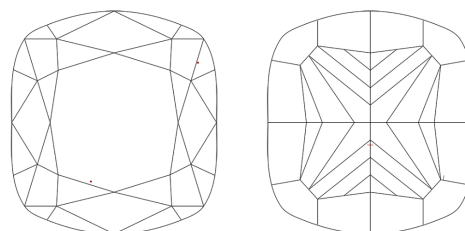
Secondary color: Brown

PROPORTIONS



Sample Image Used

CLARITY CHARACTERISTICS



KEY TO SYMBOLS

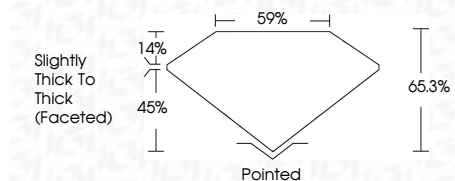
Red symbols indicate internal characteristics.
Green symbols indicate external characteristics.

COLOR

D E F G H I J Faint Very Light Light

CLARITY

IF	VS ¹⁻²	VS ¹⁻²	SI ¹⁻²	I ¹⁻³
Internally Flawless	Very Very Slightly Included	Very Slightly Included	Slightly Included	Included



ADDITIONAL GRADING INFORMATION

Polish **EXCELLENT**
Symmetry **EXCELLENT**
Fluorescence **SLIGHT**
Inscription(s) **LG694550885**
Comments: This Laboratory Grown Diamond was created by Chemical Vapor Deposition (CVD) growth process.
Indications of post-growth treatment.
Secondary color: Brown



May 3, 2025
IGI Report No **LG694550885**
CUSHION MODIFIED BRILLIANT
4.29 CARATS
Carat Weight **FANCY VIVID BROWNISH PINK**
Color Grade **VS 1**
Depth **65.3%**
Table **59%**
Girdle **Slightly Thick To Thick (Faceted)**
Culet **Pointed**
Polish **EXCELLENT**
Symmetry **EXCELLENT**
Fluorescence **SLIGHT**
Inscription(s) **LG694550885**
Comments: This Laboratory Grown Diamond was created by Chemical Vapor Deposition (CVD) growth process.
Indications of post-growth treatment.
Secondary color: Brown