



ELECTRONIC COPY

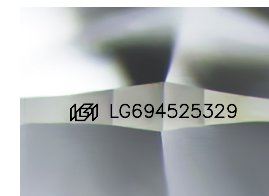
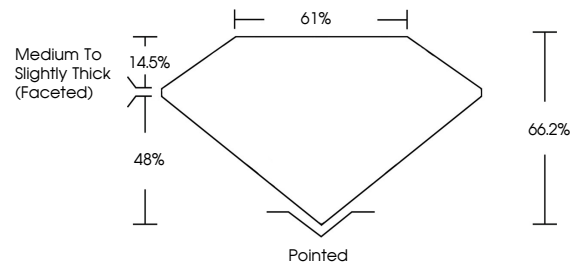
LG694525329
Report verification at igi.org



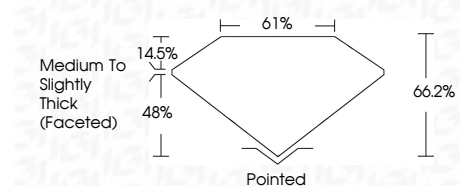
April 3, 2025
IGI Report Number **LG694525329**
Description **LABORATORY GROWN DIAMOND**
Shape and Cutting Style **CUSHION MODIFIED BRILLIANT**
Measurements **8.26 X 6.24 X 4.13 MM**
GRADING RESULTS
Carat Weight **1.66 CARAT**
Color Grade **E**
Clarity Grade **VVS 2**

April 3, 2025
IGI Report Number **LG694525329**
Description **LABORATORY GROWN DIAMOND**
Shape and Cutting Style **CUSHION MODIFIED BRILLIANT**
Measurements **8.26 X 6.24 X 4.13 MM**
GRADING RESULTS
Carat Weight **1.66 CARAT**
Color Grade **E**
Clarity Grade **VVS 2**

PROPORTIONS



Sample Image Used



ADDITIONAL GRADING INFORMATION
Polish **EXCELLENT**
Symmetry **EXCELLENT**
Fluorescence **NONE**
Inscription(s) **IGI LG694525329**
Comments: This Laboratory Grown Diamond was created by Chemical Vapor Deposition (CVD) growth process. Type IIa

COLOR

D E F G H I J Faint Very Light Light

CLARITY

IF	VS ¹⁻²	VS ¹⁻²	SI ¹⁻²	I ¹⁻³
Internally Flawless	Very Very Slightly Included	Very Slightly Included	Slightly Included	Included

ADDITIONAL GRADING INFORMATION

Polish **EXCELLENT**
Symmetry **EXCELLENT**
Fluorescence **NONE**
Inscription(s) **IGI LG694525329**
Comments: This Laboratory Grown Diamond was created by Chemical Vapor Deposition (CVD) growth process. Type IIa



IGI



April 3, 2025
IGI Report No **LG694525329**
CUSHION MODIFIED BRILLIANT
8.26 X 6.24 X 4.13 MM
1.66 CARAT
E
VVS 2
66.2%
61%
Medium to Slightly Thick (Faceted)
Pointed
EXCELLENT
EXCELLENT
NONE
IGI LG694525329
Comments: This Laboratory Grown Diamond was created by Chemical Vapor Deposition (CVD) growth process. Type IIa