



INTERNATIONAL GEMOLOGICAL INSTITUTE

ELECTRONIC COPY

LABORATORY GROWN DIAMOND REPORT

April 4, 2025
IGI Report Number **LG694525132**
Description **LABORATORY GROWN DIAMOND**
Shape and Cutting Style **ROUND BRILLIANT**
Measurements **4.66 - 4.69 X 2.86 MM**

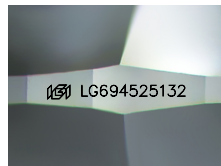
GRADING RESULTS

Carat Weight **0.38 CARAT**
Color Grade **D**
Clarity Grade **VS 2**
Cut Grade **IDEAL**

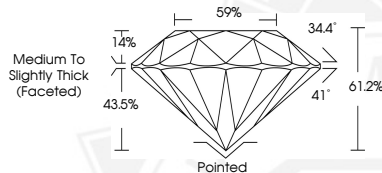
ADDITIONAL GRADING INFORMATION

Polish **EXCELLENT**
Symmetry **EXCELLENT**
Fluorescence **NONE**
Inscription(s) **IGI LG694525132**

Comments: HEARTS & ARROWS
This Laboratory Grown Diamond was created by Chemical Vapor
Deposition (CVD) growth process.
Type IIa



Sample Image Used



HEARTS & ARROWS



April 4, 2025
IGI Report Number **LG694525132**
ROUND BRILLIANT
LABORATORY GROWN DIAMOND
4.66 - 4.69 X 2.86 MM
Carat Weight **0.38 CARAT**
Color Grade **D**
Clarity Grade **VS 2**
Cut Grade **IDEAL**
Polish **EXCELLENT**
Symmetry **EXCELLENT**
Fluorescence **NONE**
Inscription(s) **IGI LG694525132**
Comments: HEARTS & ARROWS This
Laboratory Grown Diamond was
created by Chemical Vapor
Deposition (CVD) growth process.
Type IIa



April 4, 2025
IGI Report Number **LG694525132**
ROUND BRILLIANT
LABORATORY GROWN DIAMOND
4.66 - 4.69 X 2.86 MM
Carat Weight **0.38 CARAT**
Color Grade **D**
Clarity Grade **VS 2**
Cut Grade **IDEAL**
Polish **EXCELLENT**
Symmetry **EXCELLENT**
Fluorescence **NONE**
Inscription(s) **IGI LG694525132**
Comments: HEARTS & ARROWS This
Laboratory Grown Diamond was
created by Chemical Vapor
Deposition (CVD) growth process.
Type IIa



THIS DOCUMENT WAS PRODUCED WITH THE FOLLOWING SECURITY MEASURES: SPECIAL DOCUMENT PAPER, INK SCREENS, WATERMARK, BACKGROUND DESIGNS, HOLOGRAM AND OTHER SECURITY FEATURES NOT LISTED AND DO EXCEED DOCUMENT SECURITY INDUSTRY GUIDELINES.

For terms & conditions and to verify this report, please visit www.igi.org