



ELECTRONIC COPY

LG694511956
Report verification at igi.org



April 24, 2025

IGI Report Number **LG694511956**

Description **LABORATORY GROWN DIAMOND**

Shape and Cutting Style **ROUND BRILLIANT**

Measurements **10.54 - 10.57 X 6.53 MM**

GRADING RESULTS

Carat Weight **4.47 CARATS**

Color Grade **FANCY VIVID BLUE**

Clarity Grade **VS 2**

Cut Grade **IDEAL**

April 24, 2025
IGI Report Number **LG694511956**
Description **LABORATORY GROWN DIAMOND**
Shape and Cutting Style **ROUND BRILLIANT**
Measurements **10.54 - 10.57 X 6.53 MM**

GRADING RESULTS

Carat Weight **4.47 CARATS**

Color Grade **FANCY VIVID BLUE**

Clarity Grade **VS 2**

Cut Grade **IDEAL**

ADDITIONAL GRADING INFORMATION

Polish **EXCELLENT**

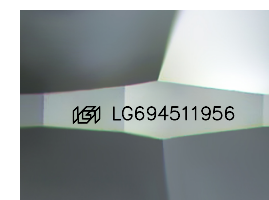
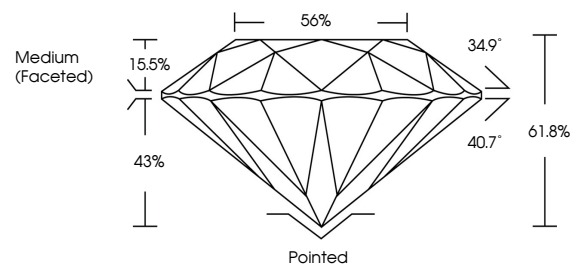
Symmetry **EXCELLENT**

Fluorescence **NONE**

Inscription(s) **IGI LG694511956**

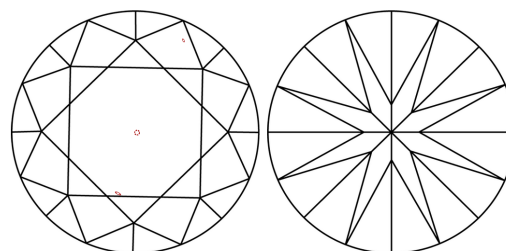
Comments: This Laboratory Grown Diamond was created by High Pressure High Temperature (HPHT) growth process. Indications of post-growth treatment.

PROPORTIONS



Sample Image Used

CLARITY CHARACTERISTICS



KEY TO SYMBOLS

Red symbols indicate internal characteristics.
Green symbols indicate external characteristics.

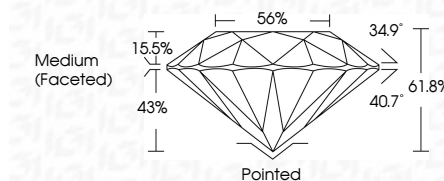
COLOR

D E F G H I J Faint Very Light Light

CLARITY

IF VS¹⁻² VS¹⁻² SI¹⁻² I¹⁻³

Internally Flawless Very Very Slightly Included Very Slightly Included Slightly Included Included



ADDITIONAL GRADING INFORMATION

Polish **EXCELLENT**

Symmetry **EXCELLENT**

Fluorescence **NONE**

Inscription(s) **IGI LG694511956**

Comments: This Laboratory Grown Diamond was created by High Pressure High Temperature (HPHT) growth process. Indications of post-growth treatment.



IGI



April 24, 2025	4.47 CARATS	Pointed
IGI Report No LG694511956	FANCY VIVID BLUE	EXCELLENT
ROUND BRILLIANT	VS 2	EXCELLENT
10.54 - 10.57 X 6.53 MM	IDEAL	NONE
Carat Weight	61.8%	NONE
Color Grade	Medium (Faceted)	IGI LG694511956
Clarity Grade		
Cut Grade		
Depth		
Table		
Girdle		
Polish		
Symmetry		
Fluorescence		
Inscription(s)		

Comments: This Laboratory Grown Diamond was created by High Pressure High Temperature (HPHT) growth process. Indications of post-growth treatment.