



ELECTRONIC COPY

LG693550766
Report verification at igi.org



March 26, 2025
IGI Report Number **LG693550766**
Description **LABORATORY GROWN DIAMOND**
Shape and Cutting Style **SHIELD MIXED CUT**
Measurements **8.34 X 7.63 X 4.69 MM**
GRADING RESULTS
Carat Weight **1.63 CARAT**
Color Grade **D**
Clarity Grade **VVS 2**

LABORATORY GROWN DIAMOND REPORT

March 26, 2025
IGI Report Number **LG693550766**
Description **LABORATORY GROWN DIAMOND**
Shape and Cutting Style **SHIELD MIXED CUT**
Measurements **8.34 X 7.63 X 4.69 MM**

GRADING RESULTS

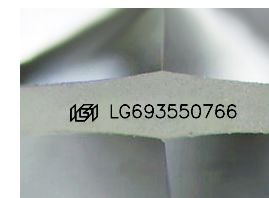
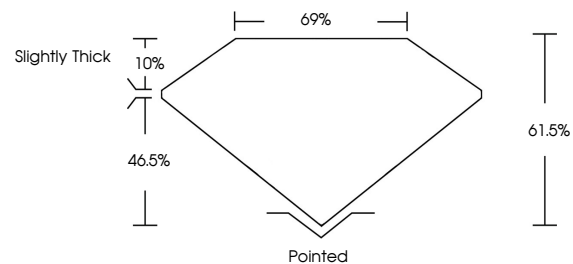
Carat Weight **1.63 CARAT**
Color Grade **D**
Clarity Grade **VVS 2**

ADDITIONAL GRADING INFORMATION

Polish **EXCELLENT**
Symmetry **EXCELLENT**
Fluorescence **NONE**
Inscription(s) **IGI LG693550766**

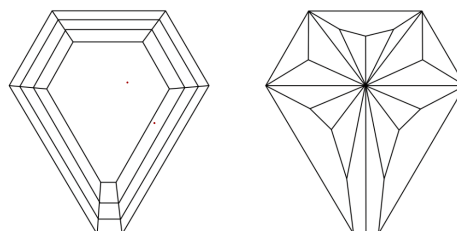
Comments: This Laboratory Grown Diamond was created by Chemical Vapor Deposition (CVD) growth process.
Type IIa

PROPORTIONS



Sample Image Used

CLARITY CHARACTERISTICS



KEY TO SYMBOLS

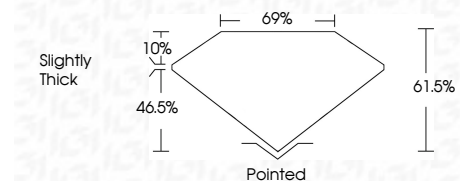
Red symbols indicate internal characteristics.
Green symbols indicate external characteristics.

COLOR

D E F G H I J Faint Very Light Light

CLARITY

IF	WS ¹⁻²	VS ¹⁻²	SI ¹⁻²	I ¹⁻³
Internally Flawless	Very Very Slightly Included	Very Slightly Included	Slightly Included	Included



ADDITIONAL GRADING INFORMATION

Polish **EXCELLENT**
Symmetry **EXCELLENT**
Fluorescence **NONE**
Inscription(s) **IGI LG693550766**
Comments: This Laboratory Grown Diamond was created by Chemical Vapor Deposition (CVD) growth process.
Type IIa



IGI



March 26, 2025
IGI Report No LG693550766
SHIELD MIXED CUT
8.34 X 7.63 X 4.69 MM
Carat Weight **1.63 CARAT**
Color Grade **D**
Clarity Grade **VVS 2**
Depth **61.6%**
Table **69%**
Girdle **Slightly Thick**
Culet **Pointed**
Polish **EXCELLENT**
Symmetry **EXCELLENT**
Fluorescence **NONE**
Inscription(s) **IGI LG693550766**
Comments: This Laboratory Grown Diamond was created by Chemical Vapor Deposition (CVD) growth process.
Type IIa