

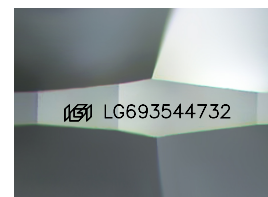
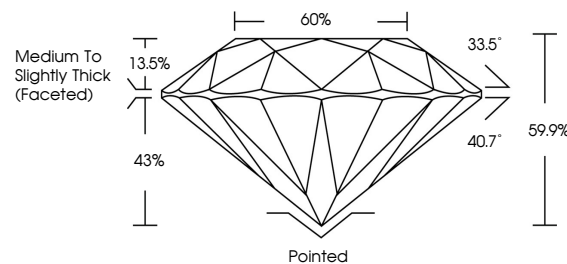


**ELECTRONIC COPY**

## LABORATORY GROWN DIAMOND REPORT

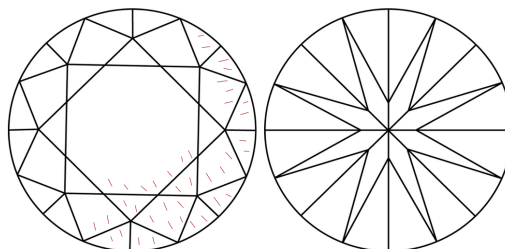
LG693544732  
Report verification at [igi.org](https://igi.org)

## PROPORTIONS



Sample Image Used

## CLARITY CHARACTERISTICS



### KEY TO SYMBOLS

Red symbols indicate internal characteristics.  
Green symbols indicate external characteristics.

## COLOR

D E F G H I J Faint Very Light Light

## CLARITY

IF WS<sup>1-2</sup> VS<sup>1-2</sup> SI<sup>1-2</sup> |<sup>1-3</sup>

Internally Flawless	Very Very Slightly Included	Very Slightly Included	Slightly Included	Included
------------------------	--------------------------------	---------------------------	----------------------	----------

## LABORATORY GROWN DIAMOND REPORT



March 24, 2025

IGI Report Number **LG693544732**Description **LABORATORY GROWN DIAMOND**Shape and Cutting Style **ROUND BRILLIANT**

Measurements 6.65 - 6.70 X 4.00 MM

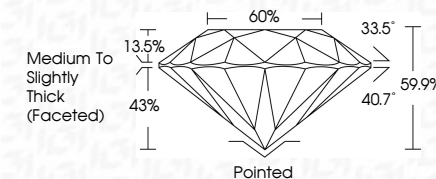
## GRADING RESULTS

Carat Weight **1.10 CARAT**

Color Grade F

Clarity Grade VS 2

Cut Grade **IDEAL**



### ADDITIONAL GRADING INFORMATION

Polish **EXCELLENT**Symmetry **EXCELLENT**Fluorescence **NONE**Inscription(s)  LG693544732

Comments: As Grown - No indication of post-growth treatment.

This Laboratory Grown Diamond was created by High Pressure High Temperature (HPHT) growth process.

Type II



© IGI 2020, International Gemological Institute

FD - 10 20

**www.igi.org**



THIS DOCUMENT WAS PRODUCED WITH THE FOLLOWING SECURITY MEASURES: SPECIAL DOCUMENT PAPER, INK SCREENS, WATERMARK, BACKGROUND DESIGNS, HOLOGRAM AND OTHER SECURITY FEATURES NOT LISTED AND DO EXCEED DOCUMENT SECURITY INDUSTRY GUIDELINES

March 24, 2025	1.10 CARAT	VS 2	Pointed
IG Report No. LG59554732	F	IDEAL	EXCELLENT
ROUND BRILLIANT		59.9%	EXCELLENT
		60%	NONE
		Medium to Slightly Thick Faceting	681 LG59554732
			Comments: As Grown - No indication of post-growth treatment.
			This Laboratory Grown Diamond was created by High Pressure High Temperature (HPHT) growth process.
			Figure 1