



**INTERNATIONAL
GEMOLOGICAL
INSTITUTE**

ELECTRONIC COPY

LG693539523
Report verification at [igi.org](https://www.igi.org)

LABORATORY GROWN DIAMOND REPORT



April 2, 2025

IGI Report Number **LG693539523**

Description	LABORATORY GROWN DIAMOND
-------------	--------------------------

Shape and Cutting Style **CUSHION MODIFIED
BRILLIANT**

Measurements **8.47 X 6.64 X 4.15 MM**

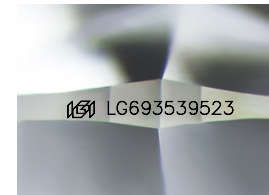
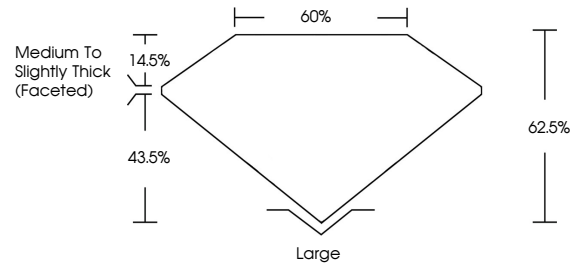
GRADING RESULTS

Carat Weight 1.71 CARAT

Color Grade D

Clarity Grade **VVS 2**

PROPORTIONS



Sample Image Used

COLOR

D E F G H I J Faint Very Light Light

CLARITY

IF WS¹⁻² VS¹⁻² SI¹⁻² I¹⁻³

Internally Flawless	Very Very Slightly Included	Very Slightly Included	Slightly Included	Included
------------------------	--------------------------------	---------------------------	----------------------	----------

ADDITIONAL GRADING INFORMATION

Polish **EXCELLENT**Symmetry **EXCELLENT**Fluorescence **NONE**Inscription(s) LG693539523

Comments: This Laboratory Grown Diamond was created by Chemical Vapor Deposition (CVD) growth process.
Type IIa



IGI



© IGI 2020, International Gemological Institute

FD - 10 20



THIS DOCUMENT WAS PRODUCED WITH THE FOLLOWING SECURITY MEASURES: SPECIAL DOCUMENT PAPER, INK SCREENS, WATERMARK, BACKGROUND DESIGNS, HOLOGRAM AND OTHER SECURITY FEATURES NOT LISTED AND DO EXCEED DOCUMENT SECURITY INDUSTRY GUIDELINES

April 2, 2025
IGI Report No LG693539523
CUSHION MODIFIED BRILLANT

	1.71 CARAT		D					
	VS 2		62.5%					
	60%		Medium To Slightly Thick (Faceted)					
	Large		EXCELLENT					
	EXCELLENT		NONE					
	1591 LG09339723							
1.87 X 6.64 X 4.15 MM								
Carat Weight								
Color Grade								
Clarity Grade								
Depth								
Table								
Girdle								
Culet								
Polish								
Symmetry								
Fluorescence								
Inscriptions								

Comments:
This Laboratory Grown Diamond was
created by Chemical Vapor Deposition
(CVD) growth process.
Type IIa

www.igi.org