

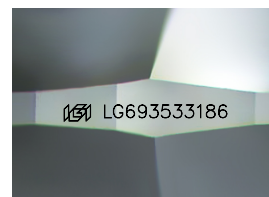
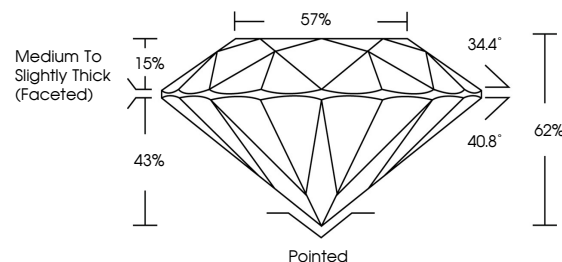


ELECTRONIC COPY

LABORATORY GROWN DIAMOND REPORT

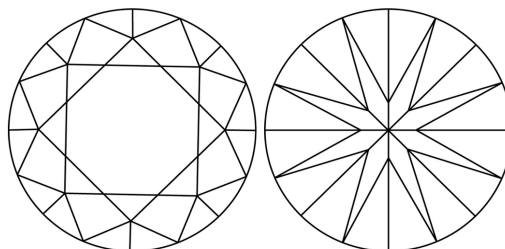
LG693533186
Report verification at lgi.org

PROPORTIONS



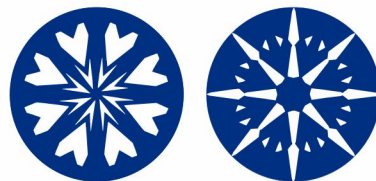
Sample Image Used

CLARITY CHARACTERISTICS



KEY TO SYMBOLS

Red symbols indicate internal characteristics.
Green symbols indicate external characteristics.



www.igi.org

LABORATORY GROWN DIAMOND REPORT



March 27, 2025

IGI Report Number **LG693533186**Description **LABORATORY GROWN DIAMOND**Shape and Cutting Style **ROUND BRILLIANT**

Measurements	8.65 - 8.70 X 5.38 MM
--------------	-----------------------

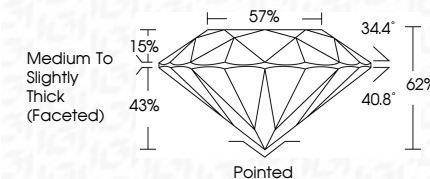
GRADING RESULTS

Carat Weight 2.50 CARATS

Color Grade D

Clarity Grade **INTERNALLY FLAWLESS**

Cut Grade **IDEAL**



ADDITIONAL GRADING INFORMATION

Polish **EXCELLENT**Symmetry **EXCELLENT**Fluorescence NONEInscription(s) LG693533186

Comments: HEARTS & ARROWS

As Grown - No indication of post-growth treatment.

This Laboratory Grown Diamond was created by High Pressure High Temperature (HPHT) growth process.

Type II



IG

March 27, 2025	GI Report No. LG495833186	2.50 CARATS	
ROUND BRILLIANT	6.65 - 6.70 X 5.38 MM		
	Color Weight	D	
	Color Grade		
	Clarity Grade	IF	
	Cut Grade	IDEAL	
	Depth	62%	
	Table	57%	
	Girdle	Medium to Slightly Thick (faceted)	
	Culet	Pointed	
	Polish	EXCELLENT	
	Symmetry	EXCELLENT	
	Fluorescence	NONE	
	Inscriptions (if any)	681 LG495833186	
	Comments:		
	HEARTS & ARROWS		
	As Grown - No indication of post-growth treatment.		
	This Laboratory Grown Diamond was produced by a High Pressure High Temperature (HPHT) growth process. Type II.		



THIS DOCUMENT WAS PRODUCED WITH THE FOLLOWING SECURITY MEASURES: SPECIAL DOCUMENT PAPER, INK SCREENS, WATERMARK, BACKGROUND DESIGNS, HOLOGRAM AND OTHER SECURITY FEATURES NOT LISTED AND DO EXCEED DOCUMENT SECURITY INDUSTRY GUIDELINES