



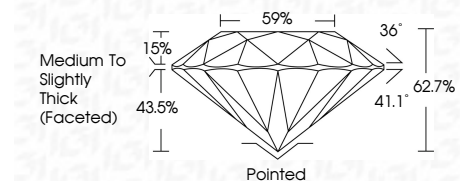
ELECTRONIC COPY

LG693514157
Report verification at igi.org



April 11, 2025
IGI Report Number **LG693514157**
Description **LABORATORY GROWN DIAMOND**
Shape and Cutting Style **ROUND BRILLIANT**
Measurements **8.04 - 8.07 X 5.05 MM**

GRADING RESULTS
Carat Weight **2.03 CARATS**
Color Grade **F**
Clarity Grade **VVS 1**
Cut Grade **EXCELLENT**



ADDITIONAL GRADING INFORMATION
Polish **EXCELLENT**
Symmetry **EXCELLENT**
Fluorescence **NONE**
Inscription(s) **IGI LG693514157**
Comments: This Laboratory Grown Diamond was created by Chemical Vapor Deposition (CVD) growth process. Type IIa. Indications of post-growth treatment.



April 11, 2025
IGI Report No LG693514157
ROUND BRILLIANT
2.03 CARATS
Color Grade **F**
Clarity Grade **VVS 1**
Depth **EXCELLENT**
Table **62.7%**
Girdle **EXCELLENT**
Medium To Slightly Thick (Faceted)
Culet **Pointed**
Polish **EXCELLENT**
Symmetry **EXCELLENT**
Fluorescence **NONE**
Inscriptions(s) **IGI LG693514157**
Comments: This Laboratory Grown Diamond was created by Chemical Vapor Deposition (CVD) growth process. Type IIa. Indications of post-growth treatment.

LABORATORY GROWN DIAMOND REPORT

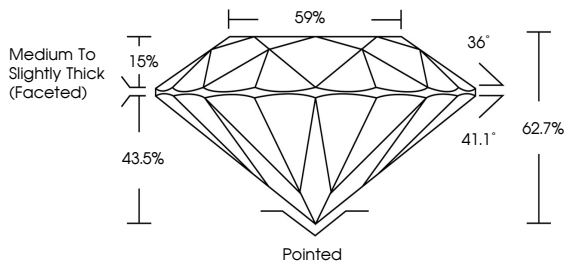
April 11, 2025
IGI Report Number **LG693514157**
Description **LABORATORY GROWN DIAMOND**
Shape and Cutting Style **ROUND BRILLIANT**
Measurements **8.04 - 8.07 X 5.05 MM**

GRADING RESULTS
Carat Weight **2.03 CARATS**
Color Grade **F**
Clarity Grade **VVS 1**
Cut Grade **EXCELLENT**

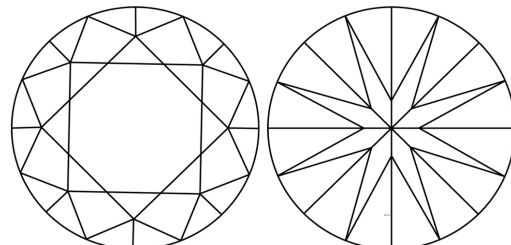
ADDITIONAL GRADING INFORMATION
Polish **EXCELLENT**
Symmetry **EXCELLENT**
Fluorescence **NONE**
Inscription(s) **IGI LG693514157**

Comments: This Laboratory Grown Diamond was created by Chemical Vapor Deposition (CVD) growth process. Type IIa. Indications of post-growth treatment.

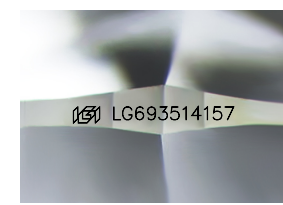
PROPORTIONS



CLARITY CHARACTERISTICS



KEY TO SYMBOLS
Red symbols indicate internal characteristics.
Green symbols indicate external characteristics.



Sample Image Used

COLOR

| | | | | | | | | | |
|---|---|---|---|---|---|---|-------|------------|-------|
| D | E | F | G | H | I | J | Faint | Very Light | Light |
|---|---|---|---|---|---|---|-------|------------|-------|

CLARITY

| | | | | |
|---------------------|-----------------------------|------------------------|-------------------|------------------|
| IF | VS ¹⁻² | VS ¹⁻² | SI ¹⁻² | I ¹⁻³ |
| Internally Flawless | Very Very Slightly Included | Very Slightly Included | Slightly Included | Included |

