



**INTERNATIONAL  
GEMOLOGICAL  
INSTITUTE**

**ELECTRONIC COPY**

**LABORATORY GROWN  
DIAMOND REPORT**

**IGI LABORATORY GROWN  
DIAMOND ID REPORT**

March 29, 2025  
IGI Report Number **LG693508645**  
**OVAL MODIFIED BRILLIANT**

**19.34 X 13.94 X 9.29 MM**  
Carat Weight 19.35 CARATS  
Color Grade FANCY VIVID PINK  
Clarity Grade VVS 2  
Polish EXCELLENT  
Symmetry EXCELLENT  
Fluorescence SLIGHT  
Inscription(s) LG693508645

Comments: This Laboratory Grown Diamond was created by Chemical Vapor Deposition (CVD) growth process. Indications of post-growth treatment.

**LABORATORY GROWN DIAMOND REPORT**

**IGI LABORATORY GROWN DIAMOND IDENTIFICATION REPORT**

March 29, 2025  
IGI Report Number LG693508645  
Description LABORATORY GROWN DIAMOND  
Shape and Cutting Style OVAL MODIFIED BRILLIANT  
Measurements 19.34 X 13.94 X 9.29 MM

**GRADING RESULTS**

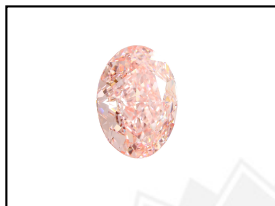
Carat Weight 19.35 CARATS  
Color Grade FANCY VIVID PINK  
Clarity Grade VVS 2

**ADDITIONAL GRADING INFORMATION**

Polish EXCELLENT  
Symmetry EXCELLENT  
Fluorescence SLIGHT  
Inscription(s) LG693508645

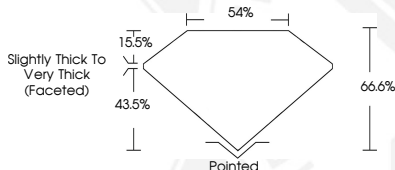
Comments: This Laboratory Grown Diamond was created by Chemical Vapor Deposition (CVD) growth process. Indications of post-growth treatment.

**LG693508645**



LG693508645

**LASERSCRIBE<sup>SM</sup>**  
Sample Images Used



**IGI LABORATORY GROWN  
DIAMOND ID REPORT**

March 29, 2025  
IGI Report Number **LG693508645**  
**OVAL MODIFIED BRILLIANT**

**19.34 X 13.94 X 9.29 MM**  
Carat Weight 19.35 CARATS  
Color Grade FANCY VIVID PINK  
Clarity Grade VVS 2  
Polish EXCELLENT  
Symmetry EXCELLENT  
Fluorescence SLIGHT  
Inscription(s) LG693508645

Comments: This Laboratory Grown Diamond was created by Chemical Vapor Deposition (CVD) growth process. Indications of post-growth treatment.

THIS DOCUMENT WAS PRODUCED WITH THE FOLLOWING SECURITY MEASURES: SPECIAL DOCUMENT PAPER, INK SCREENS, WATERMARK, BACKGROUND DESIGN, HOLOGRAM AND OTHER SECURITY FEATURES NOT LISTED AND DO EXCEED DOCUMENT SECURITY INDUSTRY GUIDELINES.

For terms & conditions and to verify this report, please visit [www.igi.org](http://www.igi.org)