



ELECTRONIC COPY

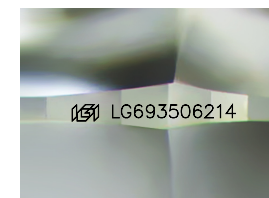
LG693506214
Report verification at igi.org



March 24, 2025
IGI Report Number **LG693506214**
Description **LABORATORY GROWN DIAMOND**
Shape and Cutting Style **PEAR STEP CUT**
Measurements **9.27 X 5.87 X 3.51 MM**

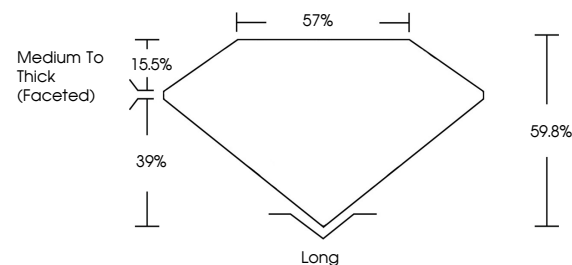
GRADING RESULTS

Carat Weight **1.31 CARAT**
Color Grade **F**
Clarity Grade **VVS 2**

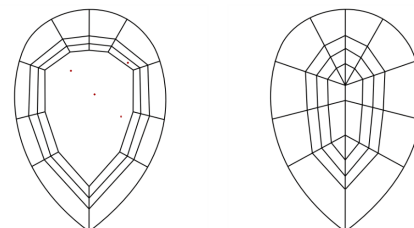


Sample Image Used

PROPORTIONS



CLARITY CHARACTERISTICS



KEY TO SYMBOLS

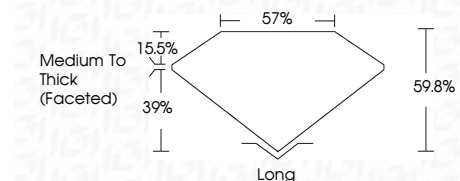
Red symbols indicate internal characteristics.
Green symbols indicate external characteristics.

COLOR

D E F G H I J Faint Very Light Light

CLARITY

IF	VS ¹⁻²	VS ¹⁻²	SI ¹⁻²	I ¹⁻³
Internally Flawless	Very Very Slightly Included	Very Slightly Included	Slightly Included	Included



ADDITIONAL GRADING INFORMATION

Polish **EXCELLENT**
Symmetry **EXCELLENT**
Fluorescence **NONE**
Inscription(s) **IGI LG693506214**
Comments: This Laboratory Grown Diamond was created by Chemical Vapor Deposition (CVD) growth process.
Type IIa



IGI



March 24, 2025
IGI Report No. **LG693506214**
PEAR STEP CUT
9.27 X 5.87 X 3.51 MM
1.31 CARAT
Color Grade **F**
Clarity Grade **VVS 2**
Depth **60.6%**
Table **57%**
Girdle **Medium To Thick (Faceted)**
Culet **Long**
Polish **EXCELLENT**
Symmetry **EXCELLENT**
Fluorescence **NONE**
Inscription(s) **IGI LG693506214**
Comments: This Laboratory Grown Diamond was created by Chemical Vapor Deposition (CVD) growth process.
Type IIa