



**ELECTRONIC COPY**

LG693506208  
Report verification at igi.org



March 24, 2025  
IGI Report Number **LG693506208**  
Description **LABORATORY GROWN DIAMOND**  
Shape and Cutting Style **CUSHION MODIFIED BRILLIANT**  
Measurements **7.65 X 4.85 X 3.16 MM**  
**GRADING RESULTS**  
Carat Weight **1.10 CARAT**  
Color Grade **F**  
Clarity Grade **VVS 2**

March 24, 2025  
IGI Report Number **LG693506208**  
Description **LABORATORY GROWN DIAMOND**  
Shape and Cutting Style **CUSHION MODIFIED BRILLIANT**  
Measurements **7.65 X 4.85 X 3.16 MM**

**GRADING RESULTS**

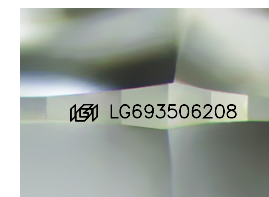
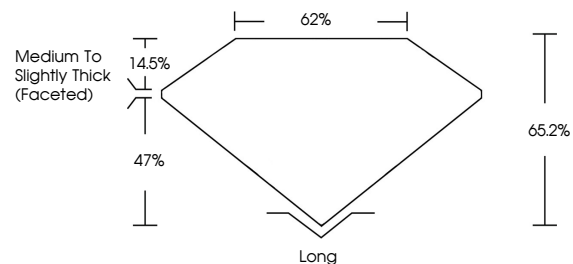
Carat Weight **1.10 CARAT**  
Color Grade **F**  
Clarity Grade **VVS 2**

**ADDITIONAL GRADING INFORMATION**

Polish **EXCELLENT**  
Symmetry **EXCELLENT**  
Fluorescence **NONE**  
Inscription(s) **LG693506208**

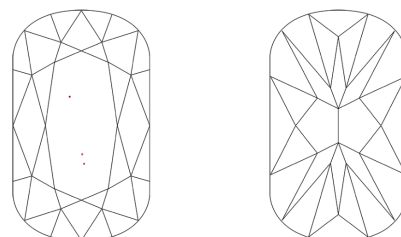
Comments: This Laboratory Grown Diamond was created by Chemical Vapor Deposition (CVD) growth process.  
Type IIa

**PROPORTIONS**



Sample Image Used

**CLARITY CHARACTERISTICS**



**KEY TO SYMBOLS**

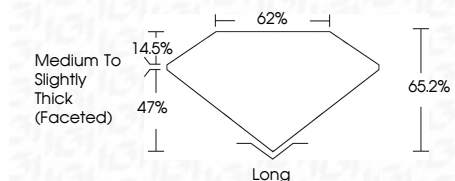
Red symbols indicate internal characteristics.  
Green symbols indicate external characteristics.

**COLOR**

D E F G H I J Faint Very Light Light

**CLARITY**

IF	VS <sup>1-2</sup>	VS <sup>1-2</sup>	SI <sup>1-2</sup>	I <sup>1-3</sup>
Internally Flawless	Very Very Slightly Included	Very Slightly Included	Slightly Included	Included



**ADDITIONAL GRADING INFORMATION**

Polish **EXCELLENT**  
Symmetry **EXCELLENT**  
Fluorescence **NONE**  
Inscription(s) **LG693506208**  
Comments: This Laboratory Grown Diamond was created by Chemical Vapor Deposition (CVD) growth process.  
Type IIa



March 24, 2025  
IGI Report No **LG693506208**  
**CUSHION MODIFIED BRILLIANT**  
7.65 X 4.85 X 3.16 MM  
1.10 CARAT  
Color Grade **F**  
Clarity Grade **VVS 2**  
Depth **65.2%**  
Table **62%**  
Girdle **Medium to Slightly Thick (Faceted)**  
Culet **Long**  
Polish **EXCELLENT**  
Symmetry **EXCELLENT**  
Fluorescence **NONE**  
Inscription(s) **LG693506208**  
Comments: This Laboratory Grown Diamond was created by Chemical Vapor Deposition (CVD) growth process.  
Type IIa

