



ELECTRONIC COPY

LABORATORY GROWN DIAMOND REPORT

LG693504948
Report verification at igi.org

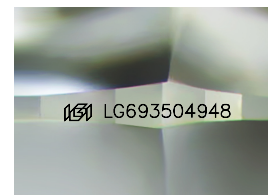
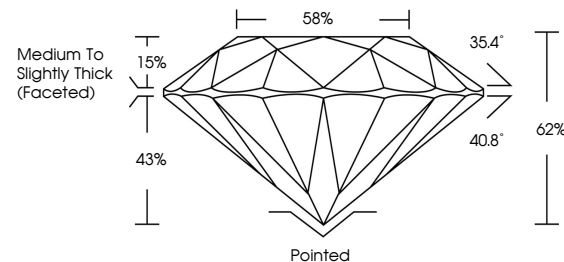
March 31, 2025	
IGI Report Number	LG693504948
Description	LABORATORY GROWN DIAMOND
Shape and Cutting Style	ROUND BRILLIANT
Measurements	8.71 - 8.73 X 5.41 MM
GRADING RESULTS	
Carat Weight	2.54 CARATS
Color Grade	E
Clarity Grade	VS 1
Cut Grade	IDEAL

ADDITIONAL GRADING INFORMATION

Polish	EXCELLENT
Symmetry	EXCELLENT
Fluorescence	NONE
Inscription(s)	15 LG693504948

Comments: This Laboratory Grown Diamond was created by Chemical Vapor Deposition (CVD) growth process.
Type IIa

PROPORTIONS



Sample Image Used

COLOR

D E F G H I J Faint Very Light Light

CLARITY

IF VS¹⁻² VS¹⁻² S¹⁻² |¹⁻³

Internally Flawless	Very Very Slightly Included	Very Slightly Included	Slightly Included	Included
------------------------	--------------------------------	---------------------------	----------------------	----------

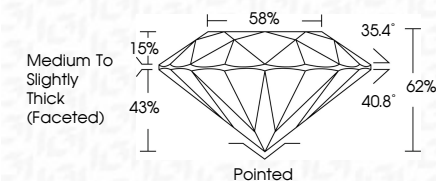
LABORATORY GROWN DIAMOND REPORT



March 31, 2025	
IGI Report Number	LG693504948
Description	LABORATORY GROWN DIAMOND
Shape and Cutting Style	ROUND BRILLIANT
Measurements	8.71 - 8.73 X 5.41 MM

GRADING RESULTS

Carat Weight	2.54 CARATS
Color Grade	E
Clarity Grade	VS 1
Cut Grade	IDEAL



ADDITIONAL GRADING INFORMATION

Polish	EXCELLENT
Symmetry	EXCELLENT
Fluorescence	NONE
Inscription(s)	(13) LG693504948

Comments: This Laboratory Grown Diamond was created by Chemical Vapor Deposition (CVD) growth process.
Type IIa



© IGI 2020, International Gemological Institute

FD - 10 20



THIS DOCUMENT WAS PRODUCED WITH THE FOLLOWING SECURITY MEASURES: SPECIAL DOCUMENT PAPER, INK SCREENS, WATERMARK, BACKGROUND DESIGNS, HOLOGRAM AND OTHER SECURITY FEATURES NOT LISTED AND DO EXCEED DOCUMENT SECURITY INDUSTRY GUIDELINES

www.igi.org

March 31, 2025	Carat Weight	2.54 CARATS	Vs 1	Pointed	Comments: This Laboratory Grown Diamond was created by Chemical Vapor Deposition (CVD) growth process. Type IIA
GI Report No. LG98509468	Color Grade	E	IDEAL	EXCELLENT	
ROUND BRILLIANT	Clarity Grade		62%	EXCELLENT	
	Depth		59%	NONE	
	Table		Medium to Slightly Thick (rounded)	lg9 LG98509468	
	Girdle				
	Culet				
	Polish				
	Symmetry				
	Fluorescence				
	Inscription(s)				