



**ELECTRONIC COPY**

LG693504400  
Report verification at igi.org



April 4, 2025  
IGI Report Number **LG693504400**  
Description **LABORATORY GROWN DIAMOND**  
Shape and Cutting Style **ROUND BRILLIANT**  
Measurements **10.30 - 10.33 X 6.28 MM**  
**GRADING RESULTS**  
Carat Weight **4.15 CARATS**  
Color Grade **D**  
Clarity Grade **SI 1**  
Cut Grade **EXCELLENT**

April 4, 2025  
IGI Report Number **LG693504400**  
Description **LABORATORY GROWN DIAMOND**  
Shape and Cutting Style **ROUND BRILLIANT**  
Measurements **10.30 - 10.33 X 6.28 MM**

**GRADING RESULTS**

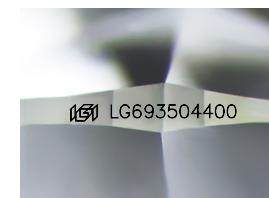
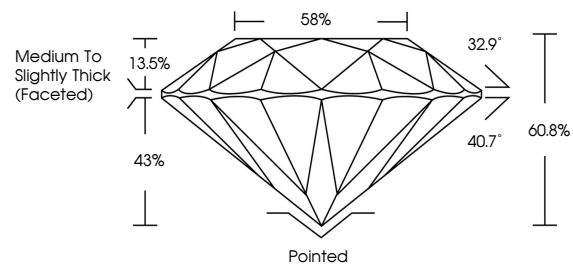
Carat Weight **4.15 CARATS**  
Color Grade **D**  
Clarity Grade **SI 1**  
Cut Grade **EXCELLENT**

**ADDITIONAL GRADING INFORMATION**

Polish **EXCELLENT**  
Symmetry **EXCELLENT**  
Fluorescence **NONE**  
Inscription(s) **IGI LG693504400**

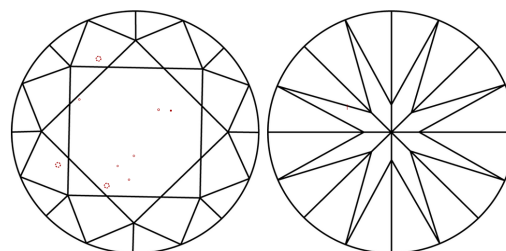
Comments: This Laboratory Grown Diamond was created by Chemical Vapor Deposition (CVD) growth process.  
Type IIa

**PROPORTIONS**



Sample Image Used

**CLARITY CHARACTERISTICS**



**KEY TO SYMBOLS**

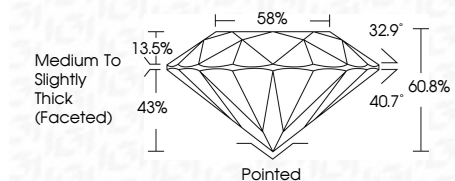
Red symbols indicate internal characteristics.  
Green symbols indicate external characteristics.

**COLOR**

D E F G H I J Faint Very Light Light

**CLARITY**

IF	VS <sup>1-2</sup>	VS <sup>1-2</sup>	SI <sup>1-2</sup>	I <sup>1-3</sup>
Internally Flawless	Very Very Slightly Included	Very Slightly Included	Slightly Included	Included



**ADDITIONAL GRADING INFORMATION**

Polish **EXCELLENT**  
Symmetry **EXCELLENT**  
Fluorescence **NONE**  
Inscription(s) **IGI LG693504400**  
Comments: This Laboratory Grown Diamond was created by Chemical Vapor Deposition (CVD) growth process.  
Type IIa



April 4, 2025  
IGI Report No LG693504400  
**ROUND BRILLIANT**  
10.30 - 10.33 X 6.28 MM  
4.15 CARATS  
D  
EXCELLENT  
SI 1  
60.8%  
58%  
Medium To Slightly Thick (Faceted)  
Pointed  
EXCELLENT  
EXCELLENT  
NONE  
IGI LG693504400  
Comments: This Laboratory Grown Diamond was created by Chemical Vapor Deposition (CVD) growth process.  
Type IIa