



ELECTRONIC COPY

LG692598994 Report verification at igi.org



March 28, 2025 IGI Report Number LG692598994 Description LABORATORY GROWN DIAMOND Shape and Cutting Style ROUND CORNERED RECTANGULAR MODIFIED BRILLIANT Measurements 9.37 X 5.98 X 3.82 MM GRADING RESULTS Carat Weight 2.03 CARATS Color Grade G Clarity Grade VS 1

March 28, 2025 IGI Report Number LG692598994 Description LABORATORY GROWN DIAMOND Shape and Cutting Style ROUND CORNERED RECTANGULAR MODIFIED BRILLIANT Measurements 9.37 X 5.98 X 3.82 MM

GRADING RESULTS

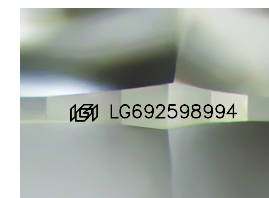
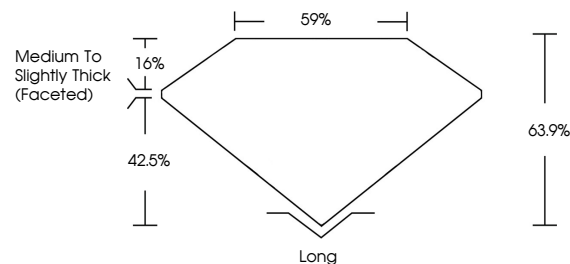
Carat Weight 2.03 CARATS Color Grade G Clarity Grade VS 1

ADDITIONAL GRADING INFORMATION

Polish EXCELLENT Symmetry EXCELLENT Fluorescence NONE Inscription(s) IGI LG692598994

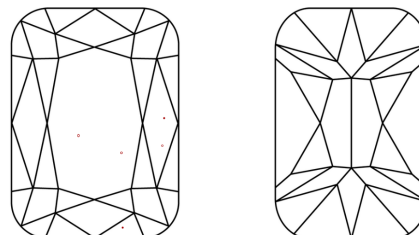
Comments: This Laboratory Grown Diamond was created by Chemical Vapor Deposition (CVD) growth process. Type IIa

PROPORTIONS



Sample Image Used

CLARITY CHARACTERISTICS



KEY TO SYMBOLS

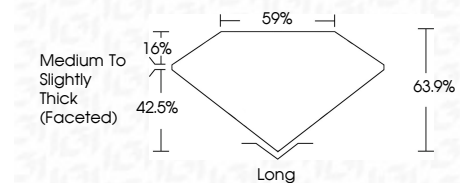
Red symbols indicate internal characteristics. Green symbols indicate external characteristics.

COLOR

D E F G H I J Faint Very Light Light

CLARITY

IF WS 1-2 VS 1-2 SI 1-2 I 1-3 Internally Flawless Very Very Slightly Included Very Slightly Included Slightly Included Included



ADDITIONAL GRADING INFORMATION

Polish EXCELLENT Symmetry EXCELLENT Fluorescence NONE Inscription(s) IGI LG692598994 Comments: This Laboratory Grown Diamond was created by Chemical Vapor Deposition (CVD) growth process. Type IIa



March 28, 2025 IGI Report No. LG692598994 ROUND CORNERED RECT. MODIFIED BRILLIANT 9.37 X 5.98 X 3.82 MM 2.03 CARATS G VS 1 63.9% 59% Medium to Slightly Thick (Faceted) Long EXCELLENT EXCELLENT NONE NONE IGI LG692598994 Comments: This Laboratory Grown Diamond was created by Chemical Vapor Deposition (CVD) growth process. Type IIa