



ELECTRONIC COPY

LG692598728
Report verification at igi.org



April 7, 2025

IGI Report Number **LG692598728**

Description **LABORATORY GROWN DIAMOND**

Shape and Cutting Style **OCTAGONAL MODIFIED
BRILLIANT**

Measurements **8.31 X 8.31 X 5.03 MM**

GRADING RESULTS

Carat Weight **2.08 CARATS**

Color Grade **F**

Clarity Grade **VS 1**

LABORATORY GROWN DIAMOND REPORT

April 7, 2025

IGI Report Number **LG692598728**

Description **LABORATORY GROWN DIAMOND**

Shape and Cutting Style **OCTAGONAL MODIFIED
BRILLIANT**

Measurements **8.31 X 8.31 X 5.03 MM**

GRADING RESULTS

Carat Weight **2.08 CARATS**

Color Grade **F**

Clarity Grade **VS 1**

ADDITIONAL GRADING INFORMATION

Polish **EXCELLENT**

Symmetry **EXCELLENT**

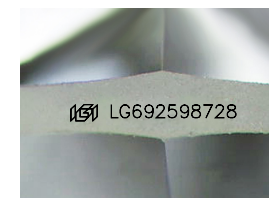
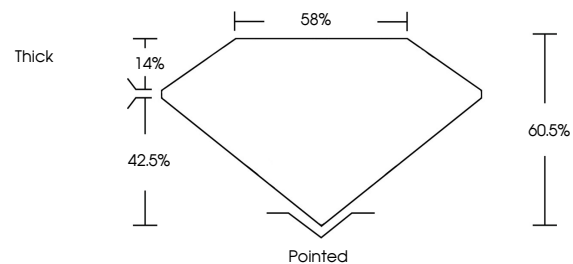
Fluorescence **NONE**

Inscription(s) **IGI LG692598728**

Comments: HEARTS & ARROWS

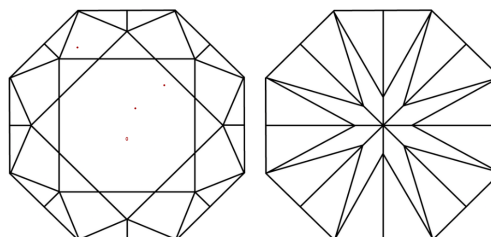
This Laboratory Grown Diamond was created by
Chemical Vapor Deposition (CVD) growth process.
Type IIa

PROPORTIONS



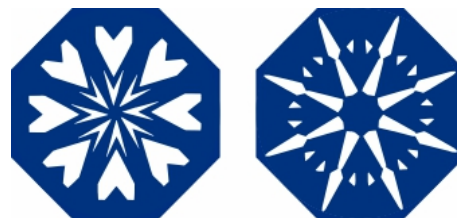
Sample Image Used

CLARITY CHARACTERISTICS



KEY TO SYMBOLS

Red symbols indicate internal characteristics.
Green symbols indicate external characteristics.



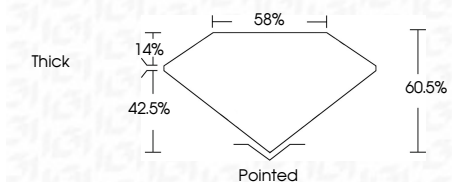
COLOR

D E F G H I J Faint Very Light Light

CLARITY

IF VS¹⁻² VS¹⁻² SI¹⁻² I¹⁻³

Internally Flawless Very Very Slightly Included Very Slightly Included Slightly Included Included



ADDITIONAL GRADING INFORMATION

Polish **EXCELLENT**

Symmetry **EXCELLENT**

Fluorescence **NONE**

Inscription(s) **IGI LG692598728**

Comments: HEARTS & ARROWS

This Laboratory Grown Diamond was created by
Chemical Vapor Deposition (CVD) growth process.
Type IIa



IGI



April 7, 2025
IGI Report No LG692598728
OCTAGONAL MODIFIED BRILLIANT
8.31 X 8.31 X 5.03 MM
2.08 CARATS
F
Color Grade
Depth 42.5%
Table 14%
Girdle 58%
Thick
Pointed
Polish EXCELLENT
Symmetry EXCELLENT
Fluorescence NONE
Inscription(s) IGI LG692598728
Comments: HEARTS & ARROWS
This Laboratory Grown Diamond was created by Chemical Vapor Deposition (CVD) growth process.
Type IIa