



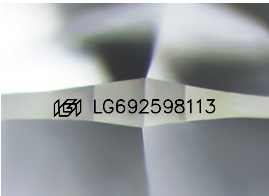
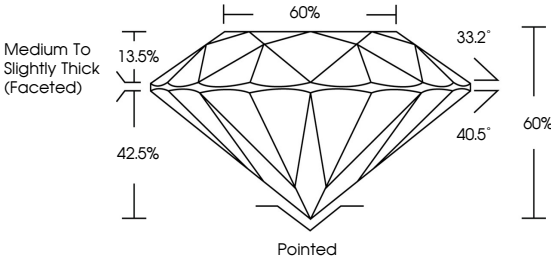
**INTERNATIONAL  
GEMOLOGICAL  
INSTITUTE**

**ELECTRONIC COPY**

# LABORATORY GROWN DIAMOND REPORT

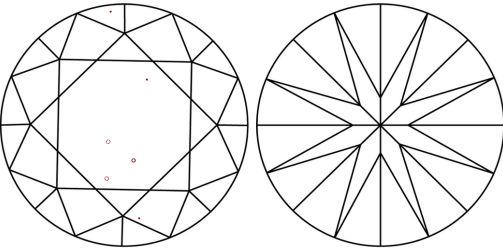
Report verification at [lgi.org](https://doi.org/10.1112/PLANTCELLPHYSIOL.12522)

## PROPORTIONS



### Sample Image Used

## CLARITY CHARACTERISTICS



## KEY TO SYMBOLS

Red symbols indicate internal characteristics.  
Green symbols indicate external characteristics.

## COLOR

D E F G H I J Faint Very Light Light

## CLARITY

IF      VVS<sup>1-2</sup>      VS<sup>1-2</sup>      SI<sup>1-2</sup>      I<sup>1-3</sup>

Internally Flawless	Very Very Slightly Included	Very Slightly Included	Slightly Included	Included
---------------------	-----------------------------	------------------------	-------------------	----------



© IGI 2020, International Gemological Institute

FD - 10 20

**www.igi.org**

THIS DOCUMENT WAS PRODUCED WITH THE FOLLOWING SECURITY MEASURES: SPECIAL DOCUMENT PAPER, INK SCREENS, WATERMARK BACKGROUND DESIGNS, HOLOGRAM AND OTHER SECURITY FEATURES NOT LISTED AND DO EXCEED DOCUMENT SECURITY INDUSTRY GUIDELINES

## LABORATORY GROWN DIAMOND REPORT



March 29, 2025

IGI Report Number **LG692598113**

Description	LABORATORY GROWN DIAMOND
-------------	--------------------------

Shape and Cutting Style **ROUND BRILLIANT**

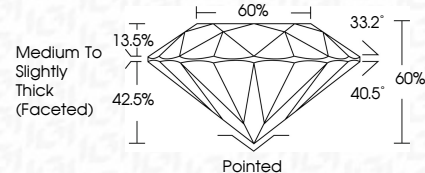
Measurements	10.52 - 10.61 X 6.33 MM
--------------	-------------------------

## GRADING RESULTS

**Carat Weight** **4.40 CARATS**

Color Grade E

Clarity Grade VS 2

Cut Grade **IDEAL**

### ADDITIONAL GRADING INFORMATION

Polish **EXCELLENCE**

Symmetry 2022, 14, 1000 EXCELLENCE

Fluorescence NON

Inscription(s)  LG69259811

Comments: This Laboratory Grown Diamond was created by Chemical Vapor Deposition (CVD) growth process.  
Type IIa



IGI

March 29, 2025	Report No. US692593113	4.40 CARATS	VS 2	PAINTED	COMMENTS: This Heavy Green Diamond was identified by Chemical Vapor Deposition (CVD) growth process. Type IIa
ROUND BRILLIANT	10.02 - 10.61 X 6.33 MM	E	IDEAL	EXCELLENT	
			60%	NONE	
			60%	1691 US692593113	
			Medium to Slightly Thick (faceted)		
	Carat Weight	Clarity Grade		Color	
	Color Grade	Cut Grade		Symmetry	
		Depth		Fluorescence	
	Table			Inscription(s)	
	Graile				
	Culet				