



**ELECTRONIC COPY**

LG692594071  
Report verification at [igi.org](http://igi.org)



April 16, 2025  
IGI Report Number **LG692594071**  
Description **LABORATORY GROWN DIAMOND**  
Shape and Cutting Style **SQUARE CUSHION MODIFIED BRILLIANT**  
Measurements **8.10 X 7.73 X 5.19 MM**  
**GRADING RESULTS**  
Carat Weight **3.03 CARATS**  
Color Grade **FANCY VIVID GREEN**  
Clarity Grade **INTERNALLY FLAWLESS**

**LABORATORY GROWN DIAMOND REPORT**

April 16, 2025  
IGI Report Number **LG692594071**  
Description **LABORATORY GROWN DIAMOND**  
Shape and Cutting Style **SQUARE CUSHION MODIFIED BRILLIANT**  
Measurements **8.10 X 7.73 X 5.19 MM**

**GRADING RESULTS**

Carat Weight **3.03 CARATS**  
Color Grade **FANCY VIVID GREEN**  
Clarity Grade **INTERNALLY FLAWLESS**

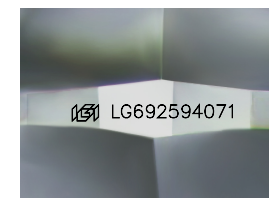
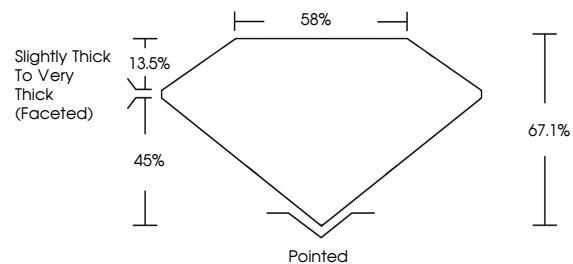
**ADDITIONAL GRADING INFORMATION**

Polish **EXCELLENT**  
Symmetry **EXCELLENT**  
Fluorescence **NONE**  
Inscription(s) **IGI LG692594071**

Comments: This Laboratory Grown Diamond was created by High Pressure High Temperature (HPHT) growth process.  
Indications of post-growth treatment.

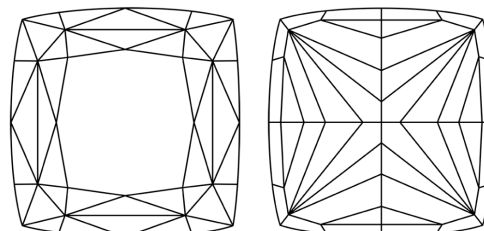
Secondary color: Yellow

**PROPORTIONS**



Sample Image Used

**CLARITY CHARACTERISTICS**



**KEY TO SYMBOLS**

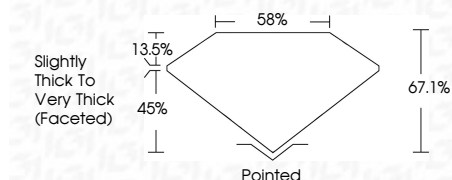
Red symbols indicate internal characteristics.  
Green symbols indicate external characteristics.

**COLOR**

D E F G H I J Faint Very Light Light

**CLARITY**

IF	VS <sup>1-2</sup>	VS <sup>1-2</sup>	SI <sup>1-2</sup>	I <sup>1-3</sup>
Internally Flawless	Very Very Slightly Included	Very Slightly Included	Slightly Included	Included



**ADDITIONAL GRADING INFORMATION**

Polish **EXCELLENT**  
Symmetry **EXCELLENT**  
Fluorescence **NONE**  
Inscription(s) **IGI LG692594071**  
Comments: This Laboratory Grown Diamond was created by High Pressure High Temperature (HPHT) growth process.  
Indications of post-growth treatment.  
Secondary color: Yellow



**IGI**



April 16, 2025  
IGI Report No **LG692594071**  
**SQUARE CUSHION MODIFIED BRILLIANT**  
**8.10 X 7.73 X 5.19 MM**  
Carat Weight **3.03 CARATS**  
Color Grade **FANCY VIVID GREEN**  
Clarity Grade **IF**  
Depth **67.1%**  
Girdle **85%**  
**Slightly Thick To Very Thick (Faceted)**  
Culet **Pointed**  
Polish **EXCELLENT**  
Symmetry **EXCELLENT**  
Fluorescence **NONE**  
Inscription(s) **IGI LG692594071**

Comments: This Laboratory Grown Diamond was created by High Pressure High Temperature (HPHT) growth process.  
Indications of post-growth treatment.  
Secondary color: Yellow