



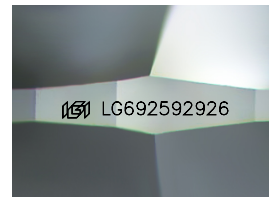
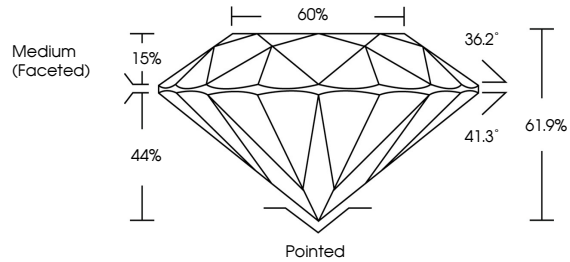
**INTERNATIONAL  
GEMOLOGICAL  
INSTITUTE**

**ELECTRONIC COPY**

## LABORATORY GROWN DIAMOND REPORT

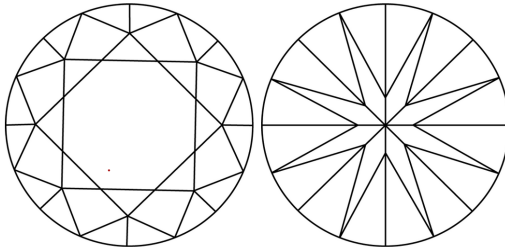
LG692592926  
Report verification at [igi.org](https://igi.org)

## PROPORTIONS



Sample Image Used

## CLARITY CHARACTERISTICS



## KEY TO SYMBOLS

Red symbols indicate internal characteristics.  
Green symbols indicate external characteristics.

## COLOR

D E F G H I J Faint Very Light Light

## CLARITY

IF                      WS<sup>1-2</sup>                      VS<sup>1-2</sup>                      SI<sup>1-2</sup>                      I<sup>1-3</sup>

Internally Flawless	Very Very Slightly Included	Very Slightly Included	Slightly Included	Included
------------------------	--------------------------------	---------------------------	----------------------	----------



© IGI 2020, International Gemological Institute

FD - 10 20

**www.igi.org**

LABORATORY GROWN DIAMOND REPORT



March 20, 2025

IGI Report Number LG692592926

Description	LABORATORY GROWN DIAMOND
-------------	--------------------------

Shape and Cutting Style **ROUND BRILLIANT**

Measurements 6.58 - 6.62 X 4.08 MM

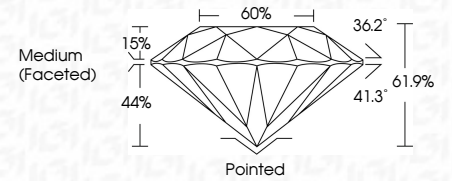
## GRADING RESULTS

Carat Weight 1.09 CARAT

Color Grade	E
-------------	---

Clarity Grade **VVS 2**

Cut Grade **IDEAL**



### ADDITIONAL GRADING INFORMATION

Polish **EXCELLENT**Symmetry **EXCELLENT**Fluorescence **NONE**Inscription(s)  LG692592926

Comments: This Laboratory Grown Diamond was created by Chemical Vapor Deposition (CVD) growth process.  
Type IIa



IGI

March 20, 2025	IGI Report No. LG4925926		ROUND BRILLIANT	
	6.68 - 6.62 X 4.08 MM	1.09 CARAT		
Carat Weight	Color Grade	E	VVS 2	IDEAL
Clarity Grade	Cut Grade	61.9%	60%	Medium (Faceted)
Depth				
Table				
Girdle				
Culet	Polished	Excellent	Excellent	None
Polish	Symmetry	Fluorescence	Inscriptions(s)	None
				IGI LG4925926
Comments:				
This Laboratory Grown Diamond was created by Chemical Vapor Deposition (CVD) growth process.				
Type IId				