



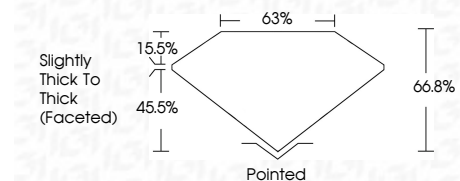
**ELECTRONIC COPY**

LG692583785  
Report verification at igi.org



May 3, 2025  
IGI Report Number **LG692583785**  
Description **LABORATORY GROWN DIAMOND**  
Shape and Cutting Style **PEAR MODIFIED BRILLIANT**  
Measurements **12.97 X 7.59 X 5.07 MM**

**GRADING RESULTS**  
Carat Weight **3.01 CARATS**  
Color Grade **D**  
Clarity Grade **VVS 1**



**ADDITIONAL GRADING INFORMATION**  
Polish **EXCELLENT**  
Symmetry **EXCELLENT**  
Fluorescence **NONE**  
Inscription(s) **IGI LG692583785**  
Comments: This Laboratory Grown Diamond was created by Chemical Vapor Deposition (CVD) growth process. Type IIa

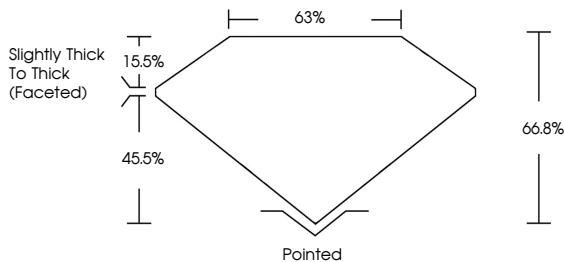


May 3, 2025  
IGI Report No **LG692583785**  
**PEAR MODIFIED BRILLIANT**  
12.97 X 7.59 X 5.07 MM  
3.01 CARATS  
D  
VVS 1  
66.8%  
45.5%  
Slightly Thick To Thick (Faceted)  
Pointed  
EXCELLENT  
EXCELLENT  
NONE  
IGI LG692583785  
Comments: This Laboratory Grown Diamond was created by Chemical Vapor Deposition (CVD) growth process. Type IIa

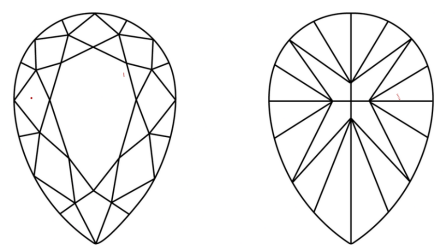
May 3, 2025  
IGI Report Number **LG692583785**  
Description **LABORATORY GROWN DIAMOND**  
Shape and Cutting Style **PEAR MODIFIED BRILLIANT**  
Measurements **12.97 X 7.59 X 5.07 MM**  
**GRADING RESULTS**  
Carat Weight **3.01 CARATS**  
Color Grade **D**  
Clarity Grade **VVS 1**  
**ADDITIONAL GRADING INFORMATION**  
Polish **EXCELLENT**  
Symmetry **EXCELLENT**  
Fluorescence **NONE**  
Inscription(s) **IGI LG692583785**

Comments: This Laboratory Grown Diamond was created by Chemical Vapor Deposition (CVD) growth process. Type IIa

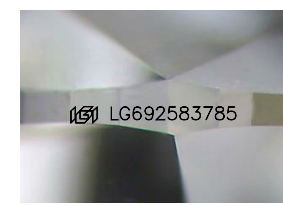
**PROPORTIONS**



**CLARITY CHARACTERISTICS**



**KEY TO SYMBOLS**  
Red symbols indicate internal characteristics.  
Green symbols indicate external characteristics.



Sample Image Used

**COLOR**

D	E	F	G	H	I	J	Faint	Very Light	Light
---	---	---	---	---	---	---	-------	------------	-------

**CLARITY**

IF	WS <sup>1-2</sup>	VS <sup>1-2</sup>	SI <sup>1-2</sup>	I <sup>1-3</sup>
Internally Flawless	Very Very Slightly Included	Very Slightly Included	Slightly Included	Included

