



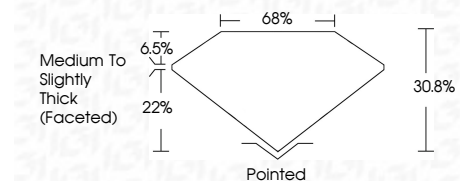
ELECTRONIC COPY

LG692560854
Report verification at igi.org



July 12, 2025
IGI Report Number LG692560854
Description LABORATORY GROWN DIAMOND
Shape and Cutting Style ROUND MODIFIED BRILLIANT
Measurements 11.29 - 11.44 X 3.50 MM

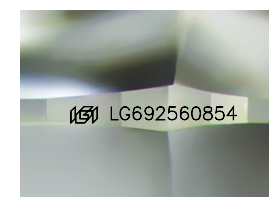
GRADING RESULTS
Carat Weight 3.24 CARATS
Color Grade E
Clarity Grade VS 1



ADDITIONAL GRADING INFORMATION
Polish EXCELLENT
Symmetry EXCELLENT
Fluorescence NONE
Inscription(s) LG692560854
Comments: As Grown - No indication of post-growth treatment.
This Laboratory Grown Diamond was created by High Pressure High Temperature (HPHT) growth process.
Type II

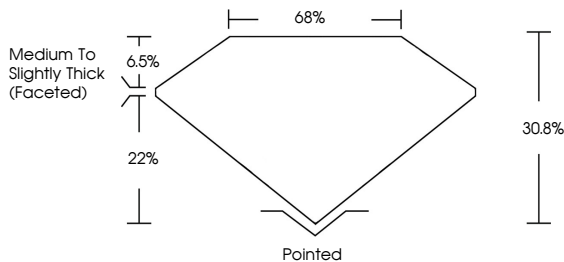


July 12, 2025
IGI Report No LG692560854
ROUND MODIFIED BRILLIANT
11.29 - 11.44 X 3.50 MM
3.24 CARATS E
30.8% 65%
Medium to Slightly Thick (Faceted)
Pointed
EXCELLENT EXCELLENT NONE
Polish Symmetry Fluorescence Inscription(s)
None
Comments: As Grown - No indication of post-growth treatment.
This Laboratory Grown Diamond was created by High Pressure High Temperature (HPHT) growth process.
Type II

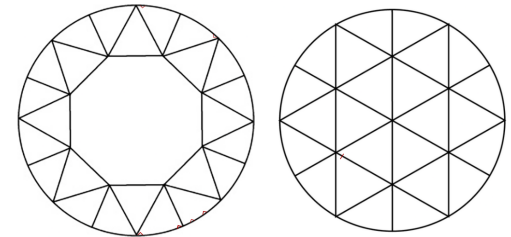


Sample Image Used

PROPORTIONS



CLARITY CHARACTERISTICS



KEY TO SYMBOLS
Red symbols indicate internal characteristics.
Green symbols indicate external characteristics.

COLOR

Table with color grades: D, E, F, G, H, I, J, Faint, Very Light, Light

CLARITY

Table with clarity grades: IF, WS 1-2, VS 1-2, SI 1-2, I 1-3, Internally Flawless, Very Very Slightly Included, Very Slightly Included, Slightly Included, Included

