

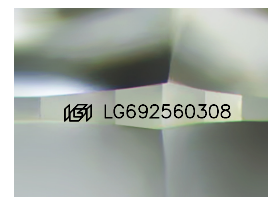
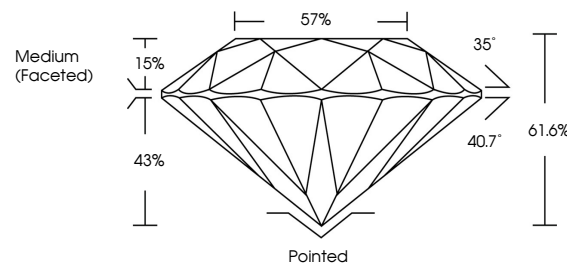


ELECTRONIC COPY

LABORATORY GROWN DIAMOND REPORT

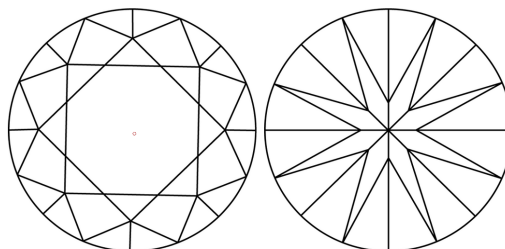
LG692560308
Report verification at lgi.org

PROPORTIONS



Sample Image Used

CLARITY CHARACTERISTICS



KEY TO SYMBOLS

Red symbols indicate internal characteristics.
Green symbols indicate external characteristics.

COLOR

D E F G H I J Faint Very Light Light

CLARITY

IF WS¹⁻² VS¹⁻² SI¹⁻² I¹⁻³

Internally Flawless	Very Very Slightly Included	Very Slightly Included	Slightly Included	Included
------------------------	--------------------------------	---------------------------	----------------------	----------

LABORATORY GROWN DIAMOND REPORT



May 20, 2025

IGI Report Number LG692560308

Description **LABORATORY GROWN DIAMOND**Shape and Cutting Style **ROUND BRILLIANT**

Measurements 8.60 - 8.65 X 5.31 MM

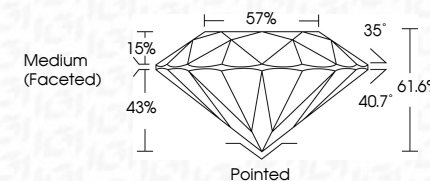
GRADING RESULTS

Carat Weight **2.42 CARATS**

Color Grade D

Clarity Grade WS 1

Cut Grade **IDEAL**



ADDITIONAL GRADING INFORMATION

Polish EXCELLENT

Symmetry **EXCELLENT**Fluorescence **NONE**Inscription(s) LG692560308

Comments: As Grown - No indication of post-growth treatment.

This Laboratory Grown Diamond was created by High Pressure High Temperature (HPHT) growth process.

Type II



© IGI 2020, International Gemological Institute

FD - 10 20



THIS DOCUMENT WAS PRODUCED WITH THE FOLLOWING SECURITY MEASURES: SPECIAL DOCUMENT PAPER, INK SCREENS, WATERMARK, BACKGROUND DESIGNS, HOLOGRAM AND OTHER SECURITY FEATURES NOT LISTED AND DO EXCEED DOCUMENT SECURITY INDUSTRY GUIDELINES

www.igi.org

May 20, 2025	2.42 CARATS	Pointed	As Growth: No indication of post-growth The Laboratory Growth Diamond was created by High Pressure High Temperature (HPHT) growth process. Type II
G1 Report No. LG29563008	D	EXCELLENT	
ROUND BRILLIANT	VVS 1	EXCELLENT	
	IDEAL	NONE	
	61.6%	lgsl156925008	
	57%	Medium (Faceted)	
		Culet	
		Polish	
		Symmetry	
		Fluorescence	
		Inscriptions(s)	