



ELECTRONIC COPY

LG692553157
Report verification at igi.org



April 2, 2025

IGI Report Number **LG692553157**

Description **LABORATORY GROWN DIAMOND**

Shape and Cutting Style **ROUND BRILLIANT**

Measurements **9.31 - 9.34 X 5.66 MM**

GRADING RESULTS

Carat Weight **3.03 CARATS**

Color Grade **FANCY VIVID PINK**

Clarity Grade **VS 2**

Cut Grade **IDEAL**

April 2, 2025

IGI Report Number **LG692553157**

Description **LABORATORY GROWN DIAMOND**

Shape and Cutting Style **ROUND BRILLIANT**

Measurements **9.31 - 9.34 X 5.66 MM**

GRADING RESULTS

Carat Weight **3.03 CARATS**

Color Grade **FANCY VIVID PINK**

Clarity Grade **VS 2**

Cut Grade **IDEAL**

ADDITIONAL GRADING INFORMATION

Polish **EXCELLENT**

Symmetry **EXCELLENT**

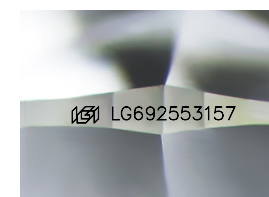
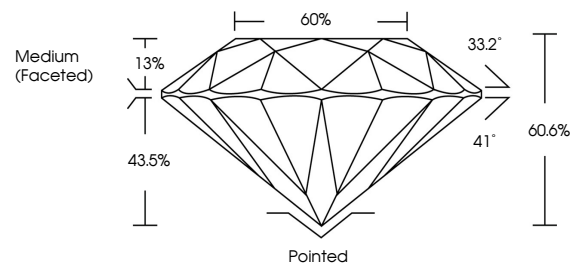
Fluorescence **SLIGHT**

Inscription(s) **LG692553157**

Comments: This Laboratory Grown Diamond was created by Chemical Vapor Deposition (CVD) growth process.

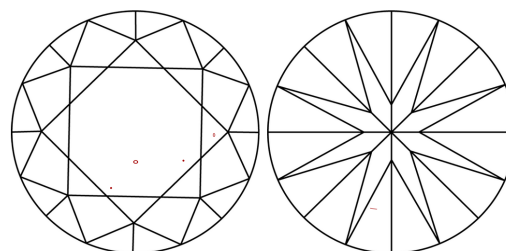
Indications of post-growth treatment.

PROPORTIONS



Sample Image Used

CLARITY CHARACTERISTICS



KEY TO SYMBOLS

Red symbols indicate internal characteristics.
Green symbols indicate external characteristics.

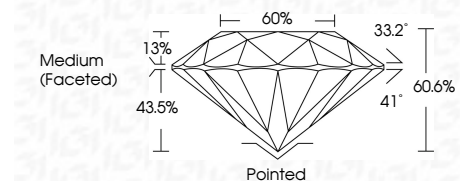
COLOR

D E F G H I J Faint Very Light Light

CLARITY

IF WS¹⁻² VS¹⁻² SI¹⁻² I¹⁻³

Internally Flawless Very Very Slightly Included Very Slightly Included Slightly Included Included



ADDITIONAL GRADING INFORMATION

Polish **EXCELLENT**

Symmetry **EXCELLENT**

Fluorescence **SLIGHT**

Inscription(s) **LG692553157**

Comments: This Laboratory Grown Diamond was created by Chemical Vapor Deposition (CVD) growth process. Indications of post-growth treatment.



April 2, 2025
IGI Report No LG692553157
ROUND BRILLIANT

3.03 CARATS
Carat Weight
FANCY VIVID PINK
Color Grade

VS 2
Clarity Grade
IDEAL
Cut Grade
60.6%
Depth
Medium (Faceted)
Grade

Pointed
EXCELLENT
Polish
EXCELLENT
Symmetry
SLIGHT
Fluorescence
SLIGHT
Inscription(s)
IGI LG692553157

Comments: This Laboratory Grown Diamond was created by Chemical Vapor Deposition (CVD) growth process. Indications of post-growth treatment.