



**ELECTRONIC COPY**

LG692544307  
Report verification at igi.org



March 26, 2025  
IGI Report Number **LG692544307**  
Description **LABORATORY GROWN DIAMOND**  
Shape and Cutting Style **SQUARE CUSHION MODIFIED BRILLIANT**

Measurements **10.81 X 10.56 X 6.95 MM**

**GRADING RESULTS**  
Carat Weight **6.52 CARATS**  
Color Grade **D**  
Clarity Grade **VS 2**

March 26, 2025  
IGI Report Number **LG692544307**  
Description **LABORATORY GROWN DIAMOND**  
Shape and Cutting Style **SQUARE CUSHION MODIFIED BRILLIANT**  
Measurements **10.81 X 10.56 X 6.95 MM**

**GRADING RESULTS**

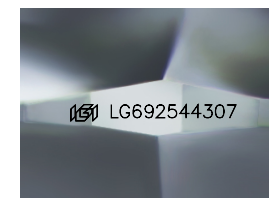
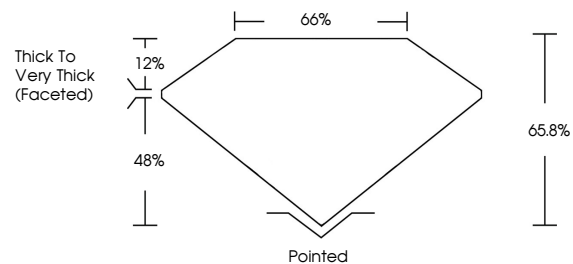
Carat Weight **6.52 CARATS**  
Color Grade **D**  
Clarity Grade **VS 2**

**ADDITIONAL GRADING INFORMATION**

Polish **EXCELLENT**  
Symmetry **EXCELLENT**  
Fluorescence **NONE**  
Inscription(s) **IGI LG692544307**

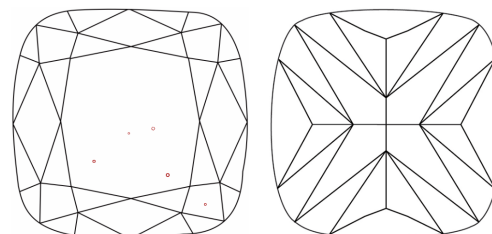
Comments: This Laboratory Grown Diamond was created by Chemical Vapor Deposition (CVD) growth process.  
Type IIa

**PROPORTIONS**



Sample Image Used

**CLARITY CHARACTERISTICS**



**KEY TO SYMBOLS**

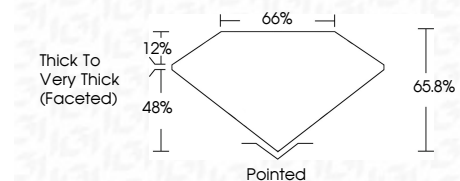
Red symbols indicate internal characteristics.  
Green symbols indicate external characteristics.

**COLOR**

D E F G H I J Faint Very Light Light

**CLARITY**

IF	VS <sup>1-2</sup>	VS <sup>1-2</sup>	SI <sup>1-2</sup>	I <sup>1-3</sup>
Internally Flawless	Very Very Slightly Included	Very Slightly Included	Slightly Included	Included



**ADDITIONAL GRADING INFORMATION**

Polish **EXCELLENT**  
Symmetry **EXCELLENT**  
Fluorescence **NONE**  
Inscription(s) **IGI LG692544307**  
Comments: This Laboratory Grown Diamond was created by Chemical Vapor Deposition (CVD) growth process.  
Type IIa



**IGI**



March 26, 2025  
IGI Report No **LG692544307**  
**SQUARE CUSHION MODIFIED BRILLIANT**  
**10.81 X 10.56 X 6.95 MM**  
Carat Weight **6.52 CARATS**  
Color Grade **D**  
Clarity Grade **VS 2**  
Depth **65.8%**  
Table **66%**  
Girdle **Thick to Very Thick (Faceted)**  
Culet **Pointed**  
Polish **EXCELLENT**  
Symmetry **EXCELLENT**  
Fluorescence **NONE**  
Inscription(s) **IGI LG692544307**  
Comments: This Laboratory Grown Diamond was created by Chemical Vapor Deposition (CVD) growth process.  
Type IIa