



**ELECTRONIC COPY**

## LABORATORY GROWN DIAMOND REPORT

March 20, 2025	
IGI Report Number	LG692543615
Description	LABORATORY GROWN DIAMOND
Shape and Cutting Style	ROUND BRILLIANT
Measurements	7.22 - 7.28 X 4.42 MM

## GRADING RESULTS

Carat Weight	1.42 CARAT
Color Grade	D
Clarity Grade	VVS 2
Cut Grade	IDEAL

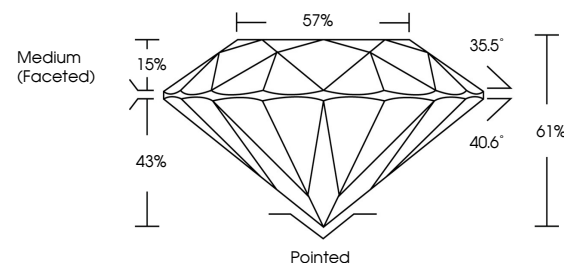
### ADDITIONAL GRADING INFORMATION

Polish	EXCELLENT
Symmetry	EXCELLENT
Fluorescence	NONE
Inscription(s)	15 LG692543615

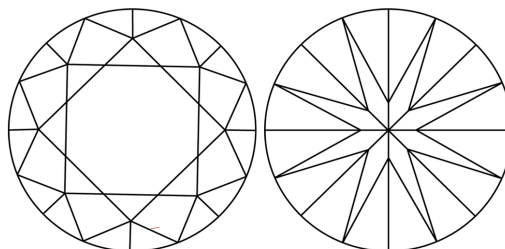
Comments: As Grown - No indication of post-growth treatment.  
This Laboratory Grown Diamond was created by High Pressure High Temperature (HPHT) growth process.  
Type II

LG692543615  
Report verification at [igi.org](https://igi.org)

## PROPORTIONS

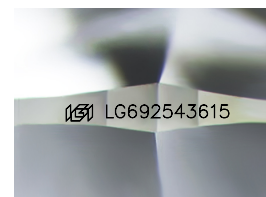


## CLARITY CHARACTERISTICS



### KEY TO SYMBOLS

Red symbols indicate internal characteristics.  
Green symbols indicate external characteristics.



Sample Image Used

## COLOR

D E F G H I J Faint Very Light Light

## CLARITY

IF WS<sup>1-2</sup> VS<sup>1-2</sup> SI<sup>1-2</sup> |<sup>1-3</sup>

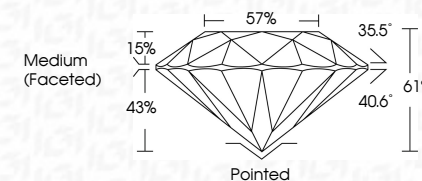
Internally Flawless	Very Very Slightly Included	Very Slightly Included	Slightly Included	Included
------------------------	--------------------------------	---------------------------	----------------------	----------



March 20, 2025	
IGI Report Number	LG692543615
Description	LABORATORY GROWN DIAMOND
Shape and Cutting Style	ROUND BRILLIANT
Measurements	7.22 - 7.28 X 4.42 MM

## GRADING RESULTS

Carat Weight	1.42 CARAT
Color Grade	D
Clarity Grade	VVS 2
Cut Grade	IDEAL



### ADDITIONAL GRADING INFORMATION

Polish	EXCELLENT
Symmetry	EXCELLENT
Fluorescence	NONE
Inscription(s)	 LG692543615
Comments: As Grown - No indication of post-growth treatment.	
This Laboratory Grown Diamond was created by High Pressure High Temperature (HPHT) growth process.	
Type II	



© IGI 2020, International Gemological Institute

FD - 10 20

**www.igi.org**



THIS DOCUMENT WAS PRODUCED WITH THE FOLLOWING SECURITY MEASURES: SPECIAL DOCUMENT PAPER, INK SCREENS, WATERMARK, BACKGROUND DESIGNS, HOLOGRAM AND OTHER SECURITY FEATURES NOT LISTED AND DO EXCEED DOCUMENT SECURITY INDUSTRY GUIDELINES

March 20, 2025  
GI Report No LG692543615  
ROUND BRILLIANT

ROUND BRILLIANT	7.22 - 7.28 X 4.42 MM	1.42 CARAT
	Carat Weight	D
	Color Grade	VVS2
	Clarity Grade	IDEAL
	Cut Grade	61%
	Depth	57%
	Table	Medium (Excellent)
	Girdle	

	Pointed	EXCELLENT	EXCELLENT	NONE
Culet				
Polish				
Symmetry				
Fluorescence				

**Comments:**  
As Grown - No Indication of post-growth treatment.  
This Laboratory Grown Diamond was created by High Pressure High Temperature (HPHT) growth process.