

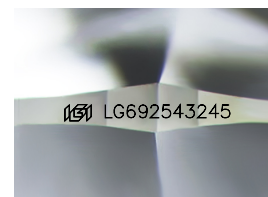
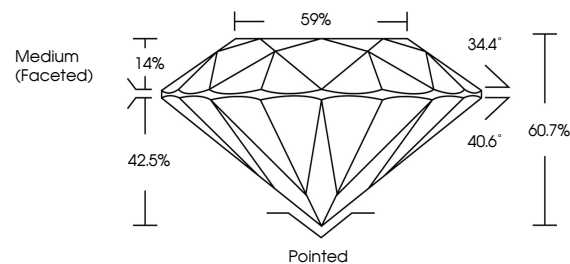


ELECTRONIC COPY

LABORATORY GROWN DIAMOND REPORT

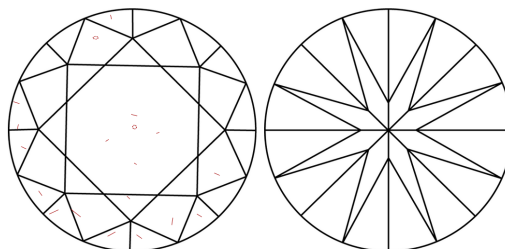
LG692543245
Report verification at igi.org

PROPORTIONS



Sample Image Used

CLARITY CHARACTERISTICS



KEY TO SYMBOLS

Red symbols indicate internal characteristics.
Green symbols indicate external characteristics.

COLOR

D E F G H I J Faint Very Light Light

CLARITY

IF WS¹⁻² VS¹⁻² SI¹⁻² |¹⁻³

Internally Flawless	Very Very Slightly Included	Very Slightly Included	Slightly Included	Included
------------------------	--------------------------------	---------------------------	----------------------	----------



© IGI 2020, International Gemological Institute

FD - 10 20

www.igi.org

LABORATORY GROWN DIAMOND REPORT



March 20, 2025

IGI Report Number **LG692543245**Description **LABORATORY GROWN DIAMOND**Shape and Cutting Style **ROUND BRILLIANT**

Measurements 6.56 - 6.60 X 4.00 MM

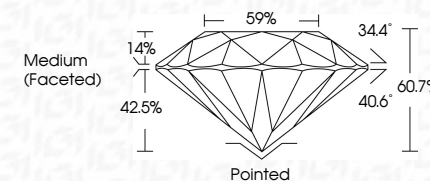
GRADING RESULTS

Carat Weight 1.07 CARAT

Color Grade D

Clarity Grade VS 2

Cut Grade **IDEAL**



ADDITIONAL GRADING INFORMATION

Polish **EXCELLENT**Symmetry **EXCELLENT**Fluorescence **NONE**Inscription(s) LG692543245

Comments: As Grown - No indication of post-growth treatment.

This Laboratory Grown Diamond was created by High Pressure High Temperature (HPHT) growth process.

Type II



March 20, 2025	1.07 CARAT	VS 2	Pointed	Comments: No Growth - No indication of post-growth This Laboratory Grown Diamond was created by High Pressure High temperature (HPHT) growth process. Type II
GI Report No LG492549245	D	IDEAL	EXCELLENT	
ROUND BRILLIANT	Color Grade	60.7%	EXCELLENT	
	Clarity Grade	59%	NONE	
	Cut Grade	Medium (Faceted)	169 LG492549245	
	Carat Weight		Culet	
6.56 - 6.60 X 4.00 MM	Color		Polish	
	Clarity		Symmetry	
	Depth		Fluorescence	
	Table		Inscriptions (s)	
	Girdle			