



ELECTRONIC COPY

LABORATORY GROWN DIAMOND REPORT

| | |
|-------------------------|--------------------------|
| March 23, 2025 | |
| IGI Report Number | LG692533941 |
| Description | LABORATORY GROWN DIAMOND |
| Shape and Cutting Style | ROUND BRILLIANT |
| Measurements | 10.18 - 10.25 X 6.26 MM |

GRADING RESULTS

| | |
|---------------|---------------------|
| Carat Weight | 4.01 CARATS |
| Color Grade | D |
| Clarity Grade | INTERNALLY FLAWLESS |
| Cut Grade | IDEAL |

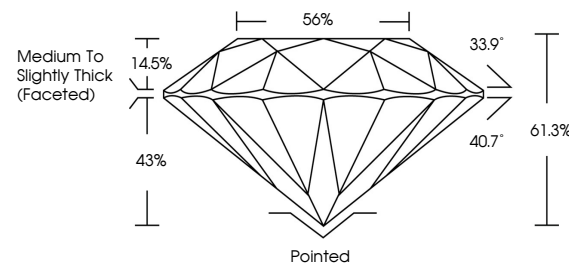
ADDITIONAL GRADING INFORMATION

| | |
|----------------|---|
| Polish | EXCELLENT |
| Symmetry | EXCELLENT |
| Fluorescence | NONE |
| Inscription(s) |  LG692533941 |

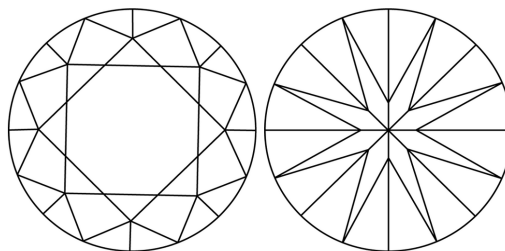
Comments: HEARTS & ARROWS
As Grown - No indication of post-growth treatment.
This Laboratory Grown Diamond was created by High
Pressure High Temperature (HPHT) growth process.
Type II

LG692533941
Report verification at igi.org

PROPORTIONS

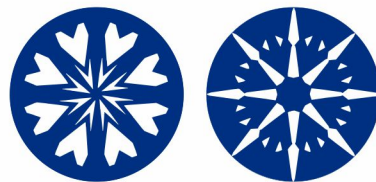


CLARITY CHARACTERISTICS

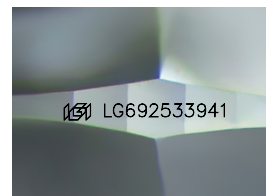


KEY TO SYMBOLS

Red symbols indicate internal characteristics.
Green symbols indicate external characteristics.



www.igi.org



Sample Image Used

COLOR

D E F G H I J Faint Very Light Light

CLARITY

IF WS¹⁻² VS¹⁻² SI¹⁻² 1-3

| | | | | |
|------------------------|--------------------------------|---------------------------|----------------------|----------|
| Internally Flawless | Very Very Slightly Included | Very Slightly Included | Slightly Included | Included |
|------------------------|--------------------------------|---------------------------|----------------------|----------|



© IGI 2020, International Gemological Institute

FD - 10 20

THIS DOCUMENT WAS PRODUCED WITH THE FOLLOWING SECURITY MEASURES: SPECIAL DOCUMENT PAPER, INK SCREENS, WATERMARK, BACKGROUND DESIGNS, HOLOGRAM AND OTHER SECURITY FEATURES NOT LISTED AND DO EXCEED DOCUMENT SECURITY INDUSTRY GUIDELINES

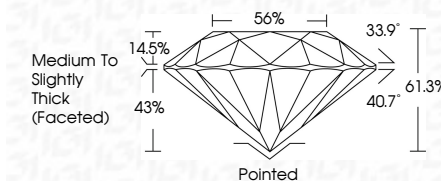
LABORATORY GROWN DIAMOND REPORT



| | |
|-------------------------|--------------------------|
| March 23, 2025 | |
| IGI Report Number | LG692533941 |
| Description | LABORATORY GROWN DIAMOND |
| Shape and Cutting Style | ROUND BRILLIANT |
| Measurements | 10.18 - 10.25 X 6.26 MM |

GRADING RESULTS

| | |
|---------------|---------------------|
| Carat Weight | 4.01 CARATS |
| Color Grade | D |
| Clarity Grade | INTERNALLY FLAWLESS |
| Cut Grade | IDEAL |



ADDITIONAL GRADING INFORMATION

| | |
|----------------|-----------------|
| Polish | EXCELLENT |
| Symmetry | EXCELLENT |
| Fluorescence | NONE |
| Inscription(s) | 151 LG692533941 |

Comments: HEARTS & ARROWS
As Grown - No indication of post-growth treatment.
This Laboratory Grown Diamond was created by High
Pressure High Temperature (HPHT) growth process.
Type II



IG

| | | |
|-----------------|---|------------------------------------|
| March 23, 2026 | IGI Report No. IGL6233941 | 4.01 CARATS |
| ROUND BRILLIANT | 10.18 - 10.25 X 6.26 MM | D |
| | Color Grade | IF |
| | Clarity Grade | IDEAL |
| | Cut Grade | 61.3% |
| | Depth | 55% |
| | Table | Medium to Slightly Thick (Faceted) |
| | Girdle | Polished |
| | Culet | EXCELLENT |
| | Polish | EXCELLENT |
| | Symmetry | NONE |
| | Fluorescence | IGI LG6233941 |
| | Inclusions (P) | |
| Comments: | HEART & ARROW | |
| | No indication of post-growth treatment. | |
| | The Laboratory Grown Diamond was created by High Pressure High Temperature (HPHT) growth process. | |