



ELECTRONIC COPY

LG692513024
Report verification at igi.org



April 2, 2025
IGI Report Number **LG692513024**
Description **LABORATORY GROWN DIAMOND**
Shape and Cutting Style **CUSHION MODIFIED BRILLIANT**
Measurements **9.74 X 7.99 X 5.27 MM**
GRADING RESULTS
Carat Weight **3.76 CARATS**
Color Grade **FANCY VIVID PINK**
Clarity Grade **VS 1**

April 2, 2025
IGI Report Number **LG692513024**
Description **LABORATORY GROWN DIAMOND**
Shape and Cutting Style **CUSHION MODIFIED BRILLIANT**
Measurements **9.74 X 7.99 X 5.27 MM**

GRADING RESULTS

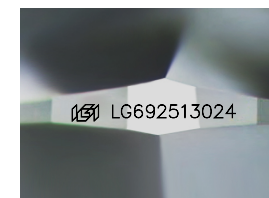
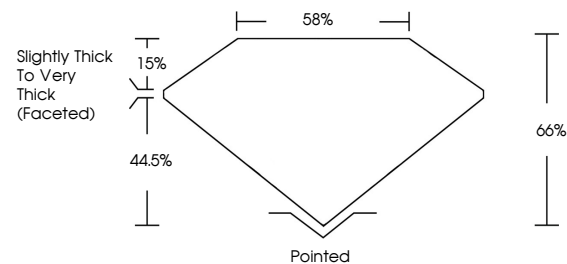
Carat Weight **3.76 CARATS**
Color Grade **FANCY VIVID PINK**
Clarity Grade **VS 1**

ADDITIONAL GRADING INFORMATION

Polish **EXCELLENT**
Symmetry **EXCELLENT**
Fluorescence **SLIGHT**
Inscription(s) **LG692513024**

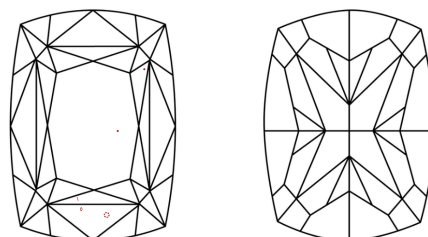
Comments: This Laboratory Grown Diamond was created by Chemical Vapor Deposition (CVD) growth process. Indications of post-growth treatment.

PROPORTIONS



Sample Image Used

CLARITY CHARACTERISTICS



KEY TO SYMBOLS

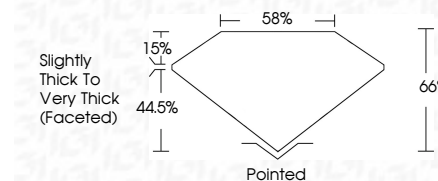
Red symbols indicate internal characteristics.
Green symbols indicate external characteristics.

COLOR

D E F G H I J Faint Very Light Light

CLARITY

IF	VS ¹⁻²	VS ¹⁻²	SI ¹⁻²	I ¹⁻³
Internally Flawless	Very Very Slightly Included	Very Slightly Included	Slightly Included	Included



ADDITIONAL GRADING INFORMATION

Polish **EXCELLENT**
Symmetry **EXCELLENT**
Fluorescence **SLIGHT**
Inscription(s) **LG692513024**
Comments: This Laboratory Grown Diamond was created by Chemical Vapor Deposition (CVD) growth process. Indications of post-growth treatment.



IGI



April 2, 2025
IGI Report No **LG692513024**
CUSHION MODIFIED BRILLIANT
3.76 CARATS
Carat Weight **FANCY VIVID PINK**
Color Grade **VS 1**
Depth **66%**
Table **58%**
Girdle **Slightly Thick To Very Thick (Faceted)**
Culet **Pointed**
Polish **EXCELLENT**
Symmetry **EXCELLENT**
Fluorescence **SLIGHT**
Inscription(s) **LG692513024**
Comments: This Laboratory Grown Diamond was created by Chemical Vapor Deposition (CVD) growth process. Indications of post-growth treatment.