



**INTERNATIONAL  
GEMOLOGICAL  
INSTITUTE**

**ELECTRONIC COPY**

**LABORATORY GROWN  
DIAMOND REPORT**

**LG691589389**

**IGI LABORATORY GROWN  
DIAMOND ID REPORT**

April 3, 2025  
IGI Report Number **LG691589389**  
**SQUARE CUSHION MODIFIED  
BRILLIANT**  
**16.10 X 15.46 X 10.42 MM**  
Carat Weight 23.10 CARATS  
Color Grade FANCY INTENSE PINK  
Clarity Grade VS 1  
Polish EXCELLENT  
Symmetry EXCELLENT  
Fluorescence SLIGHT  
Inscription(s) LG691589389

**LABORATORY GROWN DIAMOND REPORT**

**IGI LABORATORY GROWN DIAMOND IDENTIFICATION REPORT**

April 3, 2025  
IGI Report Number LG691589389  
Description LABORATORY GROWN DIAMOND  
Shape and Cutting Style SQUARE CUSHION MODIFIED BRILLIANT  
Measurements 16.10 X 15.46 X 10.42 MM

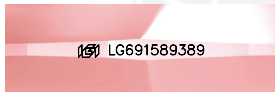
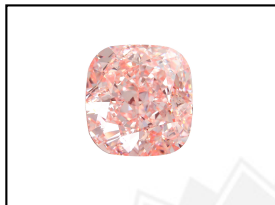
**GRADING RESULTS**

Carat Weight 23.10 CARATS  
Color Grade FANCY INTENSE PINK  
Clarity Grade VS 1

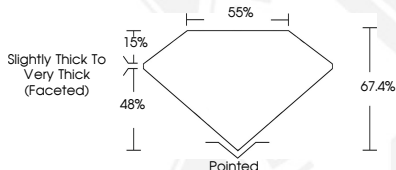
**ADDITIONAL GRADING INFORMATION**

Polish EXCELLENT  
Symmetry EXCELLENT  
Fluorescence SLIGHT  
Inscription(s) LG691589389

Comments: This Laboratory Grown Diamond was created by Chemical Vapor Deposition (CVD) growth process. Indications of post-growth treatment.



**LASERSCRIBE<sup>SM</sup>**  
Sample Images Used



**IGI LABORATORY GROWN  
DIAMOND ID REPORT**

April 3, 2025  
IGI Report Number **LG691589389**  
**SQUARE CUSHION MODIFIED  
BRILLIANT**  
**16.10 X 15.46 X 10.42 MM**  
Carat Weight 23.10 CARATS  
Color Grade FANCY INTENSE PINK  
Clarity Grade VS 1  
Polish EXCELLENT  
Symmetry EXCELLENT  
Fluorescence SLIGHT  
Inscription(s) LG691589389

Comments: This Laboratory Grown Diamond was created by Chemical Vapor Deposition (CVD) growth process. Indications of post-growth treatment.

THIS DOCUMENT WAS PRODUCED WITH THE FOLLOWING SECURITY MEASURES: SPECIAL DOCUMENT PAPER, INK SCREENS, WATERMARK, BACKGROUND DESIGN, HOLOGRAM AND OTHER SECURITY FEATURES NOT LISTED AND DO EXCEED DOCUMENT SECURITY INDUSTRY GUIDELINES.

For terms & conditions and to verify this report, please visit [www.igi.org](http://www.igi.org)