



**INTERNATIONAL
GEMOLOGICAL
INSTITUTE**

ELECTRONIC COPY

**LABORATORY GROWN
DIAMOND REPORT**

LG691581333

**IGI LABORATORY GROWN
DIAMOND ID REPORT**

April 4, 2025
IGI Report Number **LG691581333**
**CUT CORNERED RECTANGULAR
MODIFIED BRILLIANT**
7.42 X 5.20 X 3.55 MM

Carat Weight 1.15 CARAT
Color Grade FANCY VIVID BLUE
Clarity Grade VS 1
Polish EXCELLENT
Symmetry EXCELLENT
Fluorescence NONE
Inscription(s) LG691581333

Comments: This Laboratory Grown Diamond was created by High Pressure High Temperature (HPHT) growth process. Indications of post-growth treatment.

LABORATORY GROWN DIAMOND REPORT

IGI LABORATORY GROWN DIAMOND IDENTIFICATION REPORT

April 4, 2025
IGI Report Number LG691581333
Description LABORATORY GROWN DIAMOND
Shape and Cutting Style CUT CORNERED RECTANGULAR MODIFIED BRILLIANT
Measurements 7.42 X 5.20 X 3.55 MM

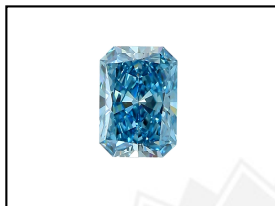
GRADING RESULTS

Carat Weight 1.15 CARAT
Color Grade FANCY VIVID BLUE
Clarity Grade VS 1

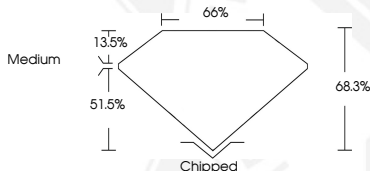
ADDITIONAL GRADING INFORMATION

Polish EXCELLENT
Symmetry EXCELLENT
Fluorescence NONE
Inscription(s) LG691581333

Comments: This Laboratory Grown Diamond was created by High Pressure High Temperature (HPHT) growth process. Indications of post-growth treatment.



LASERSCRIBESM
Sample Images Used



**IGI LABORATORY GROWN
DIAMOND ID REPORT**

April 4, 2025
IGI Report Number **LG691581333**
**CUT CORNERED RECTANGULAR
MODIFIED BRILLIANT**
7.42 X 5.20 X 3.55 MM

Carat Weight 1.15 CARAT
Color Grade FANCY VIVID BLUE
Clarity Grade VS 1
Polish EXCELLENT
Symmetry EXCELLENT
Fluorescence NONE
Inscription(s) LG691581333

Comments: This Laboratory Grown Diamond was created by High Pressure High Temperature (HPHT) growth process. Indications of post-growth treatment.

THIS DOCUMENT WAS PRODUCED WITH THE FOLLOWING SECURITY MEASURES: SPECIAL DOCUMENT PAPER, INK SCREENS, WATERMARK, BACKGROUND DESIGN, HOLOGRAM AND OTHER SECURITY FEATURES NOT LISTED AND DO EXCEED DOCUMENT SECURITY INDUSTRY GUIDELINES.

For terms & conditions and to verify this report, please visit www.igi.org