



**INTERNATIONAL
GEMOLOGICAL
INSTITUTE**

LABORATORY GROWN DIAMOND REPORT

IGI LABORATORY GROWN DIAMOND IDENTIFICATION REPORT

April 7, 2025
 IGI Report Number **LG691581196**
 Description **LABORATORY GROWN DIAMOND**
 Shape and Cutting Style **ROUND BRILLIANT**
 Measurements **7.02 - 7.07 X 4.36 MM**

GRADING RESULTS

Carat Weight **1.34 CARAT**
 Color Grade **FANCY VIVID YELLOW**
 Clarity Grade **VS 1**
 Cut Grade **EXCELLENT**

ADDITIONAL GRADING INFORMATION

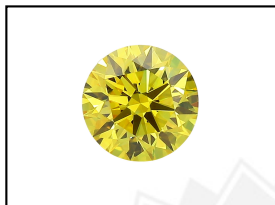
Polish **EXCELLENT**
 Symmetry **EXCELLENT**
 Fluorescence **NONE**
 Inscription(s) **IGI LG691581196**

Comments: As Grown - No indication of post-growth treatment. This Laboratory Grown Diamond was created by High Pressure High Temperature (HPHT) growth process.

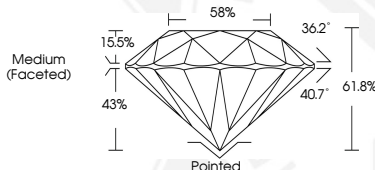
ELECTRONIC COPY

**LABORATORY GROWN
DIAMOND REPORT**

LG691581196



LASERSCRIBESM
Sample Images Used



**IGI LABORATORY GROWN
DIAMOND ID REPORT**

April 7, 2025
 IGI Report Number **LG691581196**
ROUND BRILLIANT
7.02 - 7.07 X 4.36 MM
 Carat Weight **1.34 CARAT**
 Color Grade **FANCY VIVID YELLOW**
 Clarity Grade **VS 1**
 Cut Grade **EXCELLENT**
 Polish **EXCELLENT**
 Symmetry **EXCELLENT**
 Fluorescence **NONE**
 Inscription(s) **IGI LG691581196**
 Comments: As Grown - No indication of post-growth treatment. This Laboratory Grown Diamond was created by High Pressure High Temperature (HPHT) growth process.

**IGI LABORATORY GROWN
DIAMOND ID REPORT**

April 7, 2025
 IGI Report Number **LG691581196**
ROUND BRILLIANT
7.02 - 7.07 X 4.36 MM
 Carat Weight **1.34 CARAT**
 Color Grade **FANCY VIVID YELLOW**
 Clarity Grade **VS 1**
 Cut Grade **EXCELLENT**
 Polish **EXCELLENT**
 Symmetry **EXCELLENT**
 Fluorescence **NONE**
 Inscription(s) **IGI LG691581196**
 Comments: As Grown - No indication of post-growth treatment. This Laboratory Grown Diamond was created by High Pressure High Temperature (HPHT) growth process.

THIS DOCUMENT WAS PRODUCED WITH THE FOLLOWING SECURITY MEASURES: SPECIAL DOCUMENT PAPER, INK SCREENS, WATERMARK, BACKGROUND DESIGN, HOLOGRAM AND OTHER SECURITY FEATURES NOT LISTED AND DO EXCEED DOCUMENT SECURITY INDUSTRY GUIDELINES.

For terms & conditions and to verify this report, please visit www.igi.org