



ELECTRONIC COPY

LG691572839
Report verification at igi.org



March 28, 2025

IGI Report Number **LG691572839**

Description **LABORATORY GROWN DIAMOND**

Shape and Cutting Style **OLD EUROPEAN CUT**

Measurements **8.96 - 8.98 X 5.51 MM**

GRADING RESULTS

Carat Weight **3.01 CARATS**

Color Grade **FANCY VIVID BLUE**

Clarity Grade **VS 1**

March 28, 2025

IGI Report Number **LG691572839**

Description **LABORATORY GROWN DIAMOND**

Shape and Cutting Style **OLD EUROPEAN CUT**

Measurements **8.96 - 8.98 X 5.51 MM**

GRADING RESULTS

Carat Weight **3.01 CARATS**

Color Grade **FANCY VIVID BLUE**

Clarity Grade **VS 1**

ADDITIONAL GRADING INFORMATION

Polish **EXCELLENT**

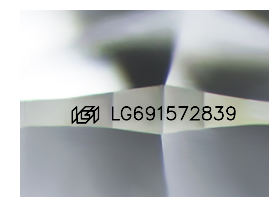
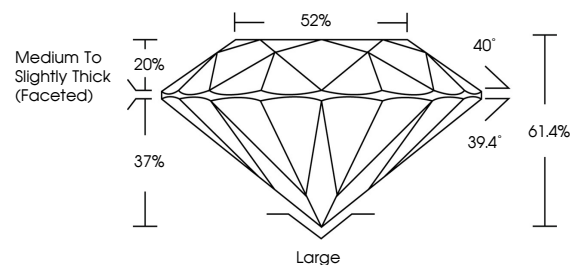
Symmetry **EXCELLENT**

Fluorescence **NONE**

Inscription(s) **IGI LG691572839**

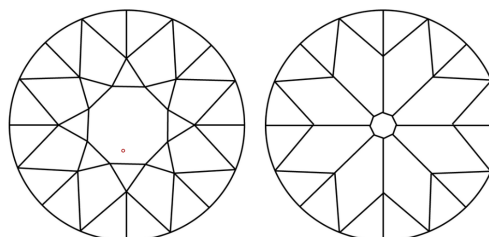
Comments: This Laboratory Grown Diamond was created by Chemical Vapor Deposition (CVD) growth process. Indications of post-growth treatment.

PROPORTIONS



Sample Image Used

CLARITY CHARACTERISTICS



KEY TO SYMBOLS

Red symbols indicate internal characteristics.
Green symbols indicate external characteristics.

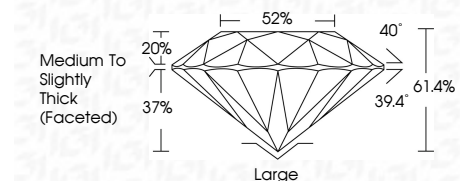
COLOR

D E F G H I J Faint Very Light Light

CLARITY

IF VS¹⁻² VS¹⁻² SI¹⁻² I¹⁻³

Internally Flawless Very Very Slightly Included Very Slightly Included Slightly Included Included



ADDITIONAL GRADING INFORMATION

Polish **EXCELLENT**

Symmetry **EXCELLENT**

Fluorescence **NONE**

Inscription(s) **IGI LG691572839**

Comments: This Laboratory Grown Diamond was created by Chemical Vapor Deposition (CVD) growth process. Indications of post-growth treatment.



March 28, 2025
IGI Report No LG691572839
OLD EUROPEAN CUT

3.01 CARATS
Carat Weight
Color Grade
Clarity Grade
Table
Girdle
Culet
Polish
Symmetry
Fluorescence
Inscription(s)

FANCY VIVID BLUE
VS 1
61.4%
52%
Medium to Slightly Thick (Faceted)
Large
EXCELLENT
EXCELLENT
NONE
IGI LG691572839

Comments: This Laboratory Grown Diamond was created by Chemical Vapor Deposition (CVD) growth process. Indications of post-growth treatment.