



ELECTRONIC COPY

LG691553415
Report verification at igi.org



April 7, 2025

IGI Report Number **LG691553415**

Description **LABORATORY GROWN DIAMOND**

Shape and Cutting Style **EMERALD CUT**

Measurements **7.96 X 5.11 X 3.63 MM**

GRADING RESULTS

Carat Weight **1.53 CARAT**

Color Grade **FANCY ORANGY PINK**

Clarity Grade **VS 2**

LABORATORY GROWN DIAMOND REPORT

April 7, 2025

IGI Report Number **LG691553415**

Description **LABORATORY GROWN DIAMOND**

Shape and Cutting Style **EMERALD CUT**

Measurements **7.96 X 5.11 X 3.63 MM**

GRADING RESULTS

Carat Weight **1.53 CARAT**

Color Grade **FANCY ORANGY PINK**

Clarity Grade **VS 2**

ADDITIONAL GRADING INFORMATION

Polish **EXCELLENT**

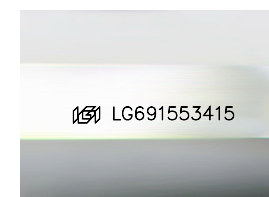
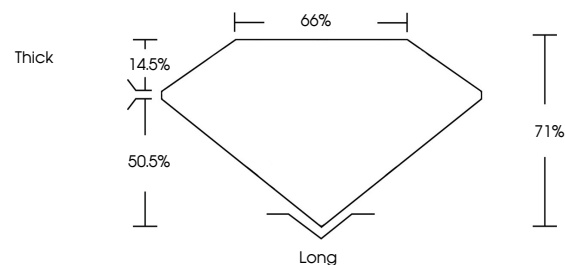
Symmetry **EXCELLENT**

Fluorescence **SLIGHT**

Inscription(s) **IGI LG691553415**

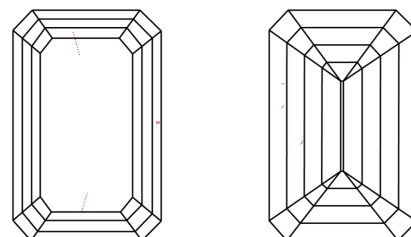
Comments: This Laboratory Grown Diamond was created by Chemical Vapor Deposition (CVD) growth process. Indications of post-growth treatment.

PROPORTIONS



Sample Image Used

CLARITY CHARACTERISTICS



KEY TO SYMBOLS

Red symbols indicate internal characteristics.
Green symbols indicate external characteristics.

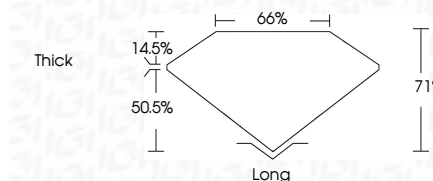
COLOR

D E F G H I J Faint Very Light Light

CLARITY

IF VS¹⁻² VS¹⁻² SI¹⁻² I¹⁻³

Internally Flawless Very Very Slightly Included Very Slightly Included Slightly Included Included



ADDITIONAL GRADING INFORMATION

Polish **EXCELLENT**

Symmetry **EXCELLENT**

Fluorescence **SLIGHT**

Inscription(s) **IGI LG691553415**

Comments: This Laboratory Grown Diamond was created by Chemical Vapor Deposition (CVD) growth process. Indications of post-growth treatment.



April 7, 2025
IGI Report No **LG691553415**
EMERALD CUT
1.53 CARAT
7.96 X 5.11 X 3.63 MM
Color Grade **FANCY ORANGY PINK**
Clarity Grade **VS 2**
Depth **71%**
Table **66%**
Girdle **Thick**
Culet **Long**
Polish **EXCELLENT**
Symmetry **EXCELLENT**
Fluorescence **SLIGHT**
Inscription(s) **IGI LG691553415**
Comments: This Laboratory Grown Diamond was created by Chemical Vapor Deposition (CVD) growth process. Indications of post-growth treatment.